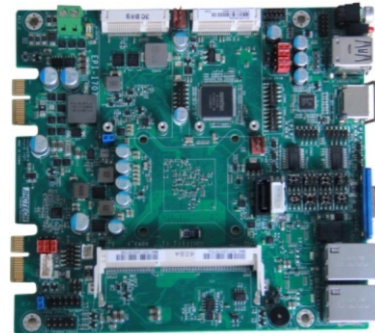


EPI-I707

Intel Baytrail Processor , 4xCOM,4xUSB,2xLAN,VGA&HDMI, DC 12-24V

EPI-I707



Key Feature

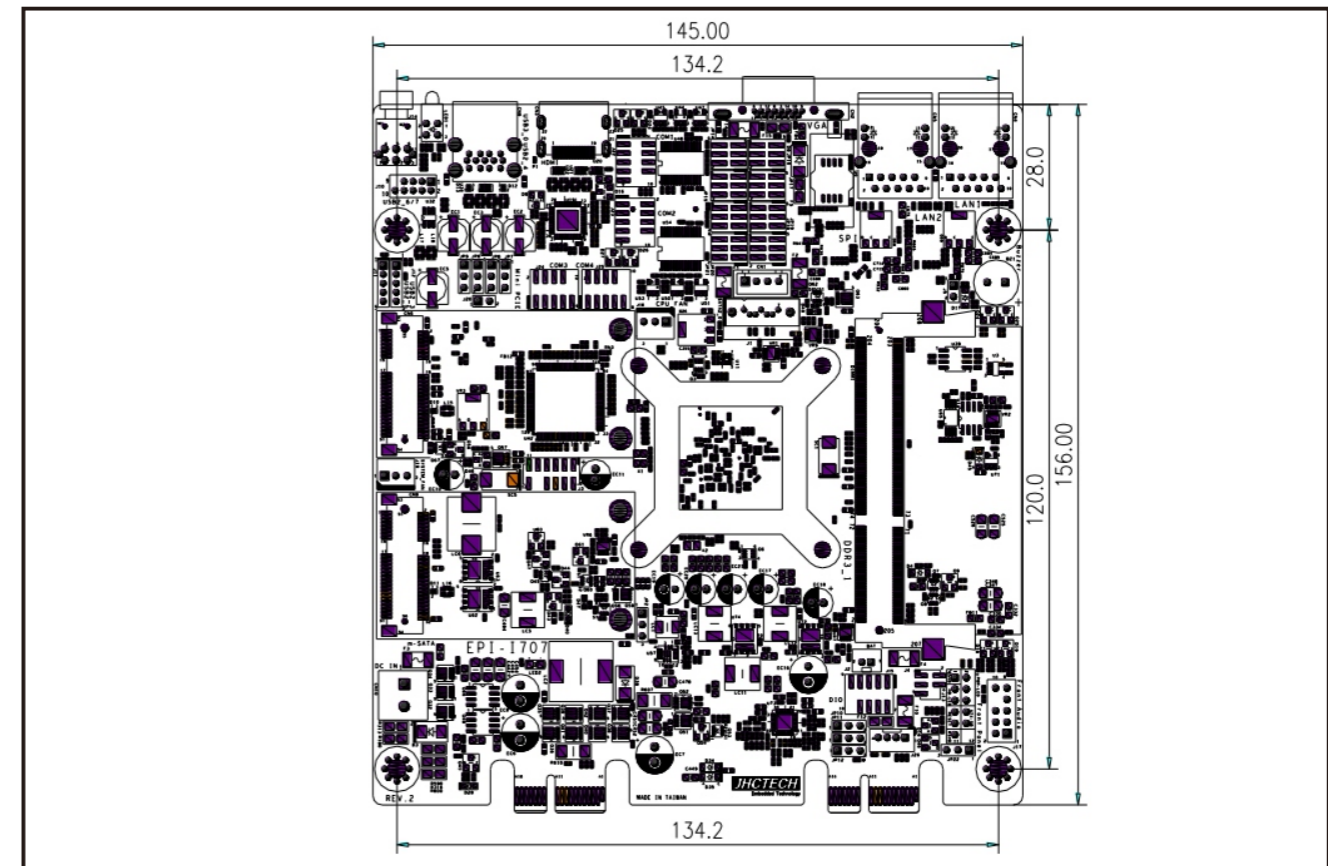
- Intel Baytrail Celeron N2807/J1900
- 1x DDR3L SODIMM , max 4GB
- 2x Mini PCIe, (PCIe+USB With SIM , mSATA)
- 2x Intel I210 Gigabit Ethernet
- HDMI,&VGA,RS232/422/485 x2, RS232x2
- 1xUSB3.0, 3xUSB2.0
- DC 12~24V Wide Power input

SPEC

System	CPU	Intel® Celeron N2807 1.58 up to 2.16GHz, 2cores,2threads,1M Cache, 22nm,TDP 4.5W Intel® Celeron J1900 2.0 up to 2.41GHz, 4cores,4threads,2M Cache, 22nm,TDP 10W
	System Memory	1x204-pin DDR3L SODIMM , up to 4GB
	Expansion	2xMINI PCIe ,1xPCIe x1+USB signal, 1xmSATA; 2xPCIex1 slots, one supports x1 signal, one provides power
	Graphics	HD Graphics, HDMI and VGA,Supports DirectX 11, OCL 1.2, OGL 3.2, H.264, MPEG2, MVC, VC-1,WMV9 and VP8
	Audio	Realtek ALC888 High Definition Audio
	LAN	2xIntel® WGI210IT PCIe Gigabit Ethernet, Integrated 10/100/1000M,IEEE 802.3, IEEE 802.3u, IEEE 802.3ab
	Storage	1xSATA 2.0 port up to 3Gb/s,Integrated AHCI controller; 1xmSATA
	I/O Ports	2x RJ45 LAN ports (Rear Panel) 1x HDMI and 1xVGA (Rear Panel) 1x USB 2.0 and 1xUSB 3.0 (Rear Panel) 4x USB 2.0 (external) 2x Rs232 and 2x RS232/422/485(external) 8 bit DIO(external) 1x front audio connector for line-out and mic-in (external)
	LED	1xPower LED, 1xHDD LED(Rear Panel)
	Control SW	1xPower button(Rear Panel)
	Power	1x12~24V DC-in connector Power Consumption: TDP 12V/0.913A(N2807 non HDD), 12V/1.37A(J1900 non HDD)
	WatchDog Timer	Watchdog timeout programmable via software from 1 to 255 seconds
	OS Support	Windows 7, Linux Fedora Ubuntu
	Mechanical	Dimension
Environmental	Operating temperature	0°C ~ 60°C – SSD 0°C ~ 50°C – HDD
	Storage temperature	-40°C ~ 85°C (-40 °F~ 185°F)
	Storage humidity	5~90%@40°C, non-condensing
	Vibration	3 Grms, IEC 60068-2-64, random, 5 ~ 500 Hz, 1 hr/axis,during operation With SSD/mSATA
	Shock	30 Grms, IEC 60068-2-64, half sine, 11 ms duration,during operation With SSD/mSATA
EMC		CE /FCC Class A

Dimension

Unit : mm



Ordering Information

NO.	Introductions
EPI-I707/S001	Embedded Singal Board,Intel J1900 CPU,VGA/HDMI/2LAN/4COM/4USB/Audio/8DIO/Mini PCIe/mSATA/SATA2
EPI-I707/S002	Embedded Singal Board,Intel N2807 CPU,VGA/HDMI/2LAN/4COM/4USB/Audio/8DIO/Mini PCIe/mSATA/SATA2