



RENU ELECTRONICS
Control, Visualisation and Communications

Factory Automation Simplified

CellTec

RENU

Electronics

Renu Electronics is a well trusted and respected supplier of solutions for factory automation.

Renu offers an innovative and powerful range of machine controllers that provide control, visualisation, data and control input, data logging and communication options.

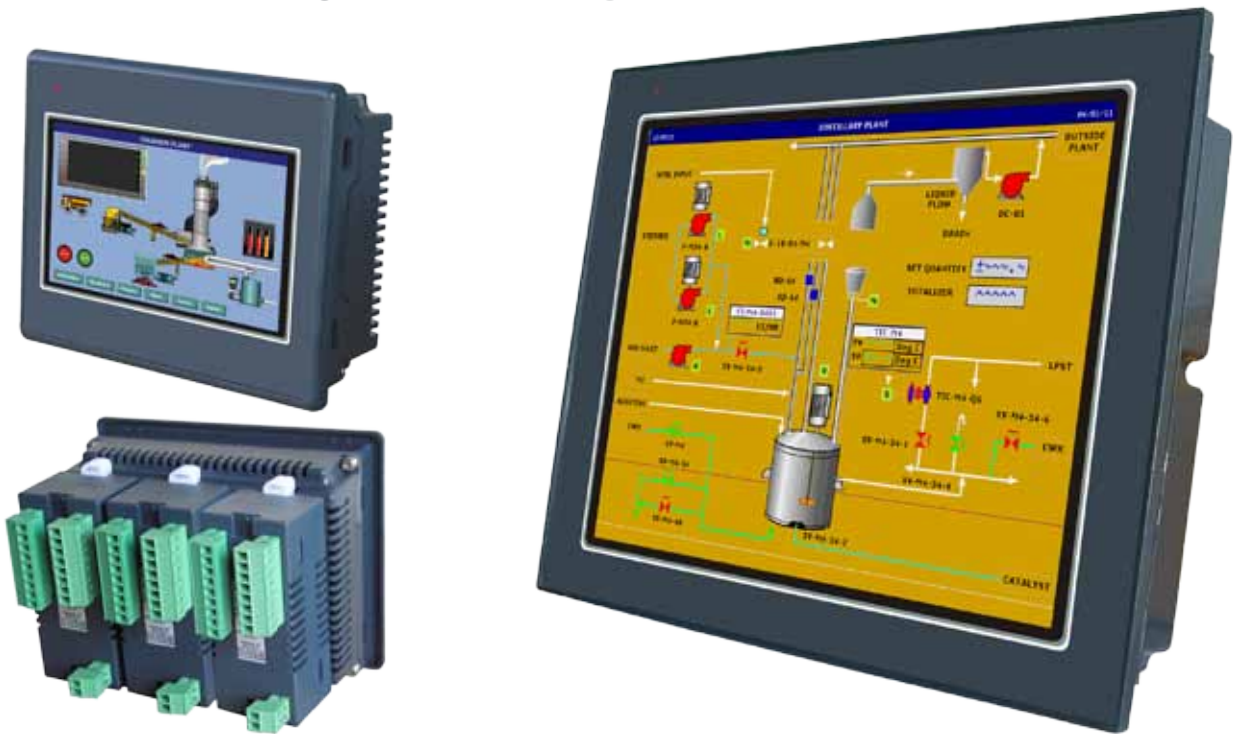
Hardware

- PLCs
- Touch screen, Graphic LCD and text display screens
- Touch screen or keypad input screens with integrated PLC
- Integrated and remote IO models
- Analogue and digital remote IO units
- Gateways and protocol converters
- SCADA software

With high speed 32 bit RISC processors, large memory capacities and a powerful instruction set, Renu PLC screens offer great flexibility with your approach to system architecture design.



Quality High Contrast,
Bright Crisp Images



New Directions in machine control

The old approach to operator control panels of wiring push buttons and lights back to PLC I/O delivered solutions that were labour intensive and inflexible. Only rudimentary operator input and process information was possible.

Touch screens allow great flexibility. Control icons can be created with software so that only relevant control options are displayed at a given time simplifying the operation of the machinery. Product recipes and PLC parameters can be modified without the need to edit PLC programs. Visualisation of the process combined with data logging and alarms allow greater analysis and optimisation of the process. Fault analysis and display can direct maintenance staff to the source of a problem. Information can be directly communicated to the office or downloaded to a USB memory stick or SD card.

Free Software

As Renu screens run ladder diagram, they can be used simply to visualise and allow operator input or to provide the complete control function for the application.

Screens and PLCs can also be combined to share processing tasks to simplify the approach or share processing power and memory to increase performance.

Programming software is provided free of charge.



Expandable PLC's

Product Features

- DIN rail / Back panel mounted compact PLC with 32 Bit RISC
- Processor
- DC inputs
- Support for High Speed Counters (up to 50 KHz) and Timers
- Up-to 2 Serial Ports , 1 USB Device Port
- Optional Ethernet port to connect PLC / Programming Port /
- Remote monitoring over Modbus TCP/IP
- High Speed PWM output (5 KHz)
- Transistor or Relay outputs
- Expandable up to 8 expansions
- Simple Ladder programming using Windows® based software
- Strong Communication capabilities
- PLC can be configured as Modbus RTU Master or Slave. Also supports other popular protocols.
- DC powered units (24 V DC)
- CE / UL approved
- Common Programming software FlexiSoft™ for the entire FlexiLogics™ family.....FREE!!



PLC

Mem	PLC Mem	Steps	DC In	Outputs	Expansion Ports	COMS	Ethernet	USB Device	RTC	Part no.
512k	8k	8	2 HS	6 Relay 2A, 2 Transistor	Yes	COM1 (RS-232), COM2 (RS-485)	No	Yes	Yes	FL 010

Analog Expansion Modules

Inputs	Outputs	Part no.
8 Analog inputs (0-10 V or 4-20 mA)		FLA0800L
8 RTD PT100/PT1000 in		FLA0800R
4 universal analog inputs 0-10 V, 0-50/100 mV, 0-20, 4-20 mA (RTD PT100, T/C)	2 analog outputs (0-10 V or 4-20 mA)	FLA0402U
	4 analog outputs (0-10, 4-20 mA)	FLA0004

Digital Expansion Modules

Inputs	Outputs	Part no.
8 Digital input	8 Relay type output digital module	FLD0808R
	16 Relay Type Digital Outputs 2A	FLD0016R
16 Digital inputs		FLD1600
	16 Digital Outputs (PNP) 0.5 A	FLD0016P
	16 Digital Outputs (NPN) 0.5 A	FLD0016N
8 Digital input	8 PNP type transistor output 0.5A. digital module	FLD0808P
8 Digital input	8 NPN type transistor output digital module	FLD0808N



HMI + I/O Combo

Product Features

- 16 x 2 Text to 5.7" TFT Colour Touch screen HMI
- Integrated / Pluggable Digital and Analog Inputs and Outputs options
- Support for Digital I/O (OC / Relays)
- Support for Analog I/O (0-20 mA / 4-20 mA / 0-10 V / -10 to +10 V)
- High Speed Counters and Timers
- Ladder editor with powerful instruction set
- Support for Recipes and 32K colour Bitmaps for colour LCD Models
- Communication Ports: One / Two serial ports to connect PLC / Drive at RS232 / 422 / 485
- Levels / Printer / Programming Port
- One USB (device) port as Programming Port
- One USB (host) port to connect USB memory drive
- Ethernet Port (Modbus TCP/IP) optional
- Dual Port communication supported for models with 2 serial ports
- User defined Function keys to support various tasks
- Data Logging, Transfer logged data on USB memory drive
- Trending (Real Time & Historical)
- Alarms (Real Time & Historical)
- Multi language (Unicode) support with true type Windows®
- Fonts for graphical models
- IP65 design. CE / UL approved
- Coming Shortly - 4.3", 7", 12.1" HMI with or without WinCE support
- Common Programming software FlexiSoft™ for the entire FlexiPanels™ family.....FREE!!



Text Panels

Display	Keys	Mem.	Steps	Screen Mem.	Local I/O	Exp. Ports	Serial Ports	USB Device	RTC	Part no.
2x16 Text Tri colour backlight	18	512k	10k	84kb	8 DC in, 8 PNP 0.5A	No	1	Yes	Yes	FP4020MR-L0808P
2x16 Text Tri colour backlight	18	512k	10k	84kb	8 DC in, 8 NPN 0.5A	No	1	Yes	Yes	FP4020MR-L0808N
2x16 Text Tri colour backlight	18	512k	10k	84kb	8 DC in, 6 Relays 2A 2 NPN 0.5A	No	1	Yes	Yes	FP4020MR-L0808R
128x64 Mono Tri colour backlight 3.5" Case	18	512k +1MB	10k	1MB	12 DC in, 6 Relays 2A 2 NPN 0.5A	No	1	Yes	Yes	FP4030M-L1208R
128x64 Mono Tri colour backlight 3.5" Case	18	512k +1MB	10k	1MB	None	3	1	Yes	Yes	FP4030MR-E
2x16 Text Tri colour backlight	18	512k		84kb	None		1	Yes	Yes	FP4020MR
128x64 Mono Tri colour backlight	18	512k +1MB		1MB	None		1	Yes	Yes	FP4030MR

Touch Panels

Display	Keys	Mem.	Steps	Screen Mem.	Local I/O	Exp. Ports	Serial Ports	USB Device	RTC	Part no.
320x240 QVGA 3.5" Colour TFT	6	8MB	160k	Upto 6MB	None	3	1	Yes + Host	Yes	FP4035T-E
320x240 QVGA 5.7" Colour TFT	6	8MB	160k	Upto 6MB	None	5	2	Yes + Host	Yes	FP4057T-E
320x240 QVGA 3.5" colour TFT	6	8MB		Upto 6MB	None	N/A	1	Yes + Host	Yes	FP4035T
320x240 QVGA 5.7" colour TFT	6	8MB		Upto 6MB	None	N/A	2	Yes + Host	Yes	FP4057T



HMI + I/O Combo



Product Features

- 3", 4.3", 7" and 12.1" Graphical / Touch screen Wide Monochrome / TFT Colour Display
- Pluggable Digital and Analog Inputs and Outputs
- Support for Digital I/O (OC / Relays)
- Analog inputs and outputs for 0-10 VDC / 4-20 mA (12 bits)
- Ladder editor with powerful instruction set
- High Speed Counters and Timers
- Support for Recipes and 32K colour Bitmaps for colour LCD Models
- Communication Ports: One / Two serial ports to connect PLC at RS232 / 422 / 485 levels / Printer / Programming Port
- One USB (device) port as Programming Port
- One USB (host) port to connect USB memory stick*
- One optional Ethernet port (10/100 Mbps. Modbus TCP/IP)
- Dual Port communication supported
- Data Logging, Transfer logged data on USB memory stick
- Trending (Real Time & Historical)
- Alarms (Real Time & Historical)
- Multilanguage (Unicode) support with true type Windows® fonts for graphical models *Not supported in FP4030MT
- IP65 design. CE approved
- Common Programming software for the entire FlexiPanels family..... FREE!!

Wide Touch Panels

Display	Mem.	Steps	Screen Mem.	Log. Mem.	Exp. Ports	Serial Ports	USB Device	Ethernet Port	RTC	Part no.
128x64 3" Mono (Muticolour backlight)	1.5MB	5k	1MB	NA	NA	2*	Yes	No	Yes	FP4030MT
480x272 WQVGA 4.3" Colour TFT	Upto 14MB	160K	Upto 10MB	Yes	NA	2*	Yes +Host	No	Yes	FP5043T
480x272 WQVGA 4.3" Colour TFT	Upto 14MB	160k	Upto 10MB	Yes	NA	2*	Yes +Host	Yes	Yes	FP5043TN
480x272 WQVGA 4.3" Colour TFT	Upto 14MB	160k	Upto 10MB	Yes	3	2*	Yes +Host	No	Yes	FP5043T-E
480x272 WQVGA 4.3" Colour TFT	Upto 14MB	160k	Upto 10MB	Yes	3	2*	Yes +Host	Yes	Yes	FP5043TN-E
800x480 WVGA 7" Colour TFT	Upto 14MB	160k	Upto 10MB	Yes	NA	2	Yes +Host	No	Yes	FP5070T
800x480 WVGA 7" Colour TFT	Upto 14MB	160k	Upto 10MB	Yes	NA	2	Yes +Host	Yes	Yes	FP5070TN
800x480 WVGA 7" Colour TFT	Upto 14MB	160k	Upto 10MB	Yes	5	2	Yes +Host	No	Yes	FP5070T-E
800x480 WVGA 7" Colour TFT	Upto 14MB	160k	Upto 10MB	Yes	5	2	Yes +Host	Yes	Yes	FP5070TN-E
800x600 SVGA 12.1" Colour TFT	Upto 14MB	160k	Upto 10MB	Yes	NA	2	Yes +Host	No	Yes	FP5121T
800x600 SVGA 12.1" Colour TFT	Upto 14MB	160k	Upto 10MB	Yes	NA	2	Yes +Host	Yes	Yes	FP5121TN

* One D type port that supports RS232 and RS485 levels on different pins. Y type cable can be used for separate RS232 and RS485 levels simultaneously.

Digital I/O - Pluggable Expansion Moudles

Input	Output	Part no.
8 (PNP or NPN)	8 (PNP 0.5A)	FPED0808P
8	8 (PNP)	FPED-HS-0808P*
8 (PNP or NPN)	8 (NPN 0.5A)	FPED0808N
8	8 (NPN)	FPED-HS-0808N*
	12 (relays 2A, 5A per common)	FPED0012R
16		FPED1600
	16 (NPN 0.5A)	FPED0016N
	16 (PNP 0.5A)	FPED0016P
8 (PNP or NPN)	8 (6 relays, 2 PNP)	FPED-HS-0808RP
8 (PNP or NPN)	8 (6 relays, 2 NPN)	FPED-HS-0808RN

Analogue Expansion Modules

Analogue I/O - Pluggable Expansion Modules

Input	Output	Part no.
2 (4-20mA, 0-20mA, 0-10 V, -10 to +10V ranges)	2 (4-20mA, 0-20mA, 0-10V)	FPEA0202L
4 (4-20mA, 0-20mA, 0-10 V, -10 to +10V ranges)		FPEA0400L
4 Universal (4-20mA, 0-20mA, TC, RTD, 0-5V, 0-10V, 0-50mV, 0-100mV ranges)	2 (4-20mA, 0-20mA, 0-10V) All AI/O 16 bit resolution	FPEA-0402U-16
8 (4-20mA)		FPEA0800LC
8 (0-10VDC)		FPEA0800LV



WinCE Based Touchscreens



Product Features

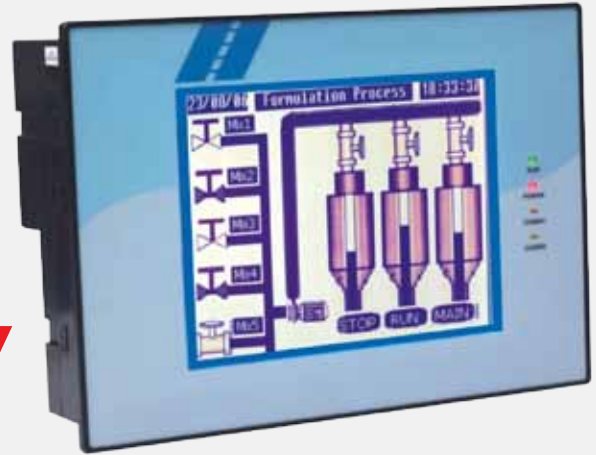
- 4.3" WQVGA (480x272 pixels), 7" WVGA (800x480 pixels, 12.1" SVGA (800x600 pixels), TFT colour touch screen graphical display.
- Serial communication ports to connect PLC at RS232 / 485 levels.
- One USB port.
- One USB Host port which can be used for external memory, USB keyboard / mouse.
- One ethernet port (10/100 Mbps).
- Upto 128 MB RAM memory.
- Upto 128 MB Flash memory.
- Windows CE 6.0 R3 support.
- Support for 65K colour, built-in RTC.
- IP66 design. CE/UL approval.
- RoHS compliant.
- Dual Port communication supported.

Software Features

- Active Sync.
- .Net compact framework.
- Remote desktop protocol.
- Web browser.
- Web sever / Telnet server / FTP server.
- Database: SQL CE 3.5.
- Software development kit and emulators.
- Application installer / uninstaller.
- COM / DCOM support.
- Silverlight.
- PDF Viewer.
- Office viewer.
- Word Pad.
- Media Player (not supported in PC5043TN).
- Audio / video support.

WinCE Panels

Display	Memory RAM	Memory Flash	Exp. Ports	Serial Ports	USB Device	Ethernet Port	RTC	Part no.
480x272 WQVGA 4.3" Colour TFT	Upto 128MB	Upto 128MB	NA	2*	Yes +Host	Yes	Yes	PC5043TN
800x480 WVGA 7" Colour TFT	Upto 128MB	Upto 128MB	NA	2*	Yes +Host	Yes	Yes	PC5070TN
800x600 SVGA 12.1" Colour TFT	Upto 128MB	Upto 128MB	NA	2*	Yes +Host	Yes	Yes	PC5121TN



Keypad & Touch Screen HMI
with Built in PLC

Product Features

- Integrated Digital Inputs and Outputs with optional Analog I/O
- Digital Inputs and Outputs rated for 24 V DC
- Power 24 V DC external.
- Support for Ladder Logic and Analog control
- High Speed Counters and Timers
- IP65 design. CE and UL certified
- Common Programming software for the entire HIO Family.....FREE!!

Keypad Based

- All features of Prizm LCD Operator Interfaces
- Analog Inputs for RTD, mV & mA.
- Analog Outputs are 4-20 mA
- Dual Port Support for connecting to a PLC / Printer / SCADA / Drive
- Built-in PID, PWM, Pulse Output Support

Touch Screen Based

- All features of Prizm Touch Screen Operator Interfaces
- Analog Inputs for RTD, mV and mA.
- Analog Outputs are 4-20 mA / 0-10 VDC
- Dual Port Support for connecting to a PLC / Printer / SCADA / Drive
- Data Logging, Trending (Real Time & Historical), Alarms (Real Time & Historical)
- Built-in PID, PWM functionality, Pulse Output, Multilanguage(Unicode) support with true type Windows® fonts.



Keypad Based HMI with Built-in PLC

Display	Keys	DC	LEDS	Ports	Inputs	Outputs	Part no.
128x64 Pixels (1.25")	8 Function	in 8 DC (+24 VDC) out 8 DC (OC)		2 Com			HIO005-0808-0000-B-C-00
128x64 Pixels (1.25")	8 Function	in 6 DC (+24 VDC) out 6 DC (OC)		2 Com	1 analog (Universal)	1 analog (mA)	HIO005-0606-0101-U-B-C-00
4X20	8 Function 12 Numeric	in 16 DC (+24 VDC) out 12 DC (10 Relays, 2 NPN)	8	2 Com			HIO050-1612-0000-B-R-00
4X20	8 Function 12 Numeric	in 16 DC (+24 VDC) out 12 DC (10 Relays, 2 PNP)	8	2 Com	4 analog (Universal)	2 analog (ma)	HIO050-1612-0402-U-B-RP-00
128 X 64 Pixels (3.1")	4 Function 12 Numeric	in 16 DC (+24 VDC) out 12 DC (OC)	4	2 Com	4 analog (Universal)	2 analog (ma)	HIO140-1612-0402-U-B-C-00
128 x 64 Pixels graphic display	4 Function 2 Scroll 12 Numeric	in 16 DC out 10 DC relay 2 DC (NPN) out	4	2 Com	4 analog (Universal)	2 analog (ma)	HIO140-1612-0402-U-B-R-00

Touch Screen Based HMI with Built-in PLC

Display	Mem.	RTC	Ports	Inputs	Outputs	Part no.
192x64 Pixels touch screen		Yes		12 digital 2 analog universal voltage (RTD,T/C, 0-100 mv) 4 4-20 ma (10 bit)	8 digital (NPN) 1 4-20 ma	HIO-230-1208-0601-U-B-C-00
320x240 Pixels (5.7") monochrome (16 gray scale) touch screen	4MB			28 digital (+24 V DC) (4 high speed counters of 25 K) 4 analog universal	16 digital (14 Relays + 2 OC NPN) 2 analog (4-20 mA / 0-10 V DC)	HIO285-2816-0402-U-B-R-00
320X240 Pixels (5.7") Colour (256)	4MB	Yes	2 nos Serial	28 digital (+24 V DC) (4 high speed counters of 25 K)	16 digital (14 Relays + 2 OC NPN)	HIO545-2816-0000-B-R-00
320X240 Pixels (5.7") Colour (256)	4MB	Yes	2 nos Serial	28 digital (+24 V DC) (4 high speed counters of 25 K) 4 analog universal	16 digital (14 Relays + 2 OC NPN) 2 analog (4-20 mA / 0-10 V DC)	HIO545-2816-0402-U-B-R-00



Keypad, Monochrome & Colour Touch Screen HMI

Product Features

- Dual Port Support
- IP65 design and CE / UL certification
- Common Programming software for the entire Prizm family.....FREE!!

Keypad Based

- Text or Graphic backlit LCD Displays with LED indication
- Direct connection to PLC / Drive programming terminal with support for most PLCs / Drives
- Direct connection to Modbus RTU, other open Protocols
- Connection possible to multiple PLCs from one Operator Panel
- Support Floating Point Data, Recipes, Real Time Clock and
- Multiple Data Entry objects per screen
- Allows Local or Global key definitions with Macros for key actions
- Bar graph, Alarms, Messages and Data Entry on same screen

Touch Screen

- Monochrome and Colour
- Colour available from 3.5" to 12.1" TFT
- Optional Ethernet / USB ports
- Direct connection to most PLCs as well as Modbus RTU
- Real Time Clock, Pop-up Windows
- Wizards for rapid application development
- Real Time and Historical Alarms and Trending
- Data Logging and Recipes support
- Backlight Screen Saver



Keypad Based HMI

Display	Keys	LED's	RTC	Part no.
2x16 LCD	6	2	No	PZM-10-24-B
2x16 LCD	8	10	Yes	PZM-18-24-B-EV3
4x20 LCD	8	8	No	PZM-50-24-B-EV3
128X64 Pixels (3" graphical)	18	4	Yes	PZM-140-24-B-V3

Monochrome Touch Screen HMI

Display	Memory	RTC	Part no.
192X64 pixels	512k	Yes	PZM-230-24-B
320X240 Pixels (5.7"), Monochrome (16 Grey scales)	4MB	Yes	PZM-285-24-B

Colour Touch Screen HMI

Display	Memory	Serial Port	Ethernet Port	USB Port	RTC	User Defined Function Keys	Part no.
320X240 Pixels (5.7") 256 Colours	4MB				Yes		PZM-545-24-B
320X240 Pixels (5.7") 256 Colours Graphic LCD Touch screen	3MB	2	1	1	Yes		PZM-550N-N-24-B
320X240 TFT Screen (3.5") 256 Colours	4MB	2 Uni		1	Yes	6	PZM-720-N-24-B
800X600 Pixels (12") 256 colours TFT screen	4MB	2 Ind	1		Yes		PZM-760N-24-B

Note: PZM-720-N-24-B, Additional Feature: Modbus TCP (Client and Server) and Ethernet IP support



Protocol Converters,
Analog & Digital I/O Modules



Product Features

Gateway Protocol Converters

- Make your Serial Device such as PLC / Drives / DCS / PID Controllers / Energy Meters etc. compatible with other Serial Devices
- LonWorks Network
- CAN Open / CAN Network
- Profibus Network
- Ethernet Network (Modbus TCP/IP)
- HART Devices
- CE and UL certified
- Windows® based Common Programming Software for the entire Gateway family.....FREE!!

I/O Modules

- Low cost compact I/O modules with DIN rail mounting
- High Speed Modbus RTU (Slave) communication
- User definable Address, Baud rate and Parity
- 2 wire RS485 port provided on pluggable terminal block
- CE marked with optional UL certification

FIOA (Analog I/O Modules)

- Programmable inputs allow same modules to accept RTD,
- Thermocouple, mA, mV and Volts
- 12 / 16 bits analog inputs with analog outputs
- Can be multi dropped as Modbus Slave on RS485 Network
- Indication for Diagnostics, Power and Communication

FIOD (Digital I/O Modules)

- LED indication for each Input, Output, Communication and Power ON
- No configuration software required
- Relay and Transistor outputs available

Gateway - Protocol Converter

Description	Part no.
2 Communication ports Port 1: Serial port selectable as RS 232 / 485 / CMOS Port 2: Profibus DP v0 -Slave	GWY-500-B
For Serial to Modbus TCP with I/O and Pass through for specific PLC's	GWY- 610-B

FIOA - Field Analog I/O Modules

Inputs	Outputs	Part no.
08 Linear Analog (0-10 VDC / 4-20 mA)		FIOA-0800-L-B
08 Analog (only RTD. PT 1000)		FIOA-0800-R-B
04 Universal Analog (RTD, TC, mA, mV and Voltage)	2 Analog (4-20 mA / 0-10 VDC)	FIOA-0402-U-B

FIOD - Field Digital I/O Modules

Input	Output	Com Port	Part no.
8 Digital	08 digital (Relay) with LED indication	2 Wire RS 485	FIOD-0808-R-B
8 Digital	08 digital (Transistor. PNP) with LED indication	2 Wire RS 485	FIOD-0808-P-B
16 Digital with LED indication		2 Wire RS 485	FIOD-1600-B
	16 digital (Relay) with LED indication	2 Wire RS 485	FIOD-0016-R-B



HMI SCADA Software,
Signal Converter

Product Features

ASTRA (HMI / SCADA Software)

- Powerful SCRIPT
- Recipe Management, 256 Levels of Security
- Alarms and Reports Management
- Extensive Data and Event Logging.
- Real Time and Historical Trending
- Wizards for Screen Development
- Extensive Tags and Database Management
- HTTP Web Server, Excel Report Generator
- Script Based Report, Advanced Component Library
- Open Data Based Connectivity (ODBC)
- OLE for Process Control (OPC Client)
- Software and Hardware Lock Support

RS232/CMOS to RS422 Signal Converter

- DIN rail or panel mounted compact Converter
- Port powered or external powered design
- Isolation of power and communication ports
- Automatic detection of communication baud rate
- Automatic control of transceiver direction
- CE / UL certification
- Easy to use plug and play device (no configuration software required)



ASTRA - HMI / SCADA Software

Description	Tags	Part no.
ASTRA SCADA Software x 1 License Inclusive of: 1 Copy of CD 1 Copy of Quick Start Manual Configuration +Runtime version with one existing driver	50	AST-50-xxxxxxx
Configuration +Runtime version with one existing driver	300	AST-300
Configuration +Runtime version with one existing driver	1000	AST-1000

Signal Converter - RS232 / CMOS to RS422 / RS485

Description	Power	Part no.
RS 232 to RS 422 / 485 / CMOS converter	24 V DC external.	CNV-02

Isolator & Port Multiplexer

See more at celltec.com.au



Compact Current Isolator, Port Multiplexer



Product Features

Current Isolator

- DIN Rail or Panel Mounted compact Current Isolator
- Isolated Input, Output and Power Supply (3 Port Isolation)
- 4-20 mA Input
- 4-20 mA isolated output
- Output zero and span set by use of potentiometer
- Additional isolated 24 V DC power source for loop powering

Port Multiplexer

- DIN Rail or Panel Mounted compact Port Multiplexer
- Connect Two Master devices to any serial slave device
- (e.g. PLC, Drive) on same protocol
- Hardware with three communication ports
- RS232 support for Master Ports. PLC port with RS232 / RS422 /
- 2 or 4 wire RS485 / CMOS
- Ideal for PLCs / Drives which have only one communication port
- Same model can be configured for different supported protocols
- CE marked with optional UL certification
- Free Programming software for Port Multiplexer !!

Isolator & Port Multiplexer

Current Isolator

Input	Output	Part no.
4-20 mA	Isolated 4-20 mA	CIS-00-B

Port Multiplexer

Description	COMS	Suitability	Part no.
3 communication ports	RS 232, RS 422 / 485	Only for DF1, Modbus, Omron Hostlink, Idec Micro and Aromat FP protocols.	PMX-00-B

Our Product Categories

Terminal Boxes



ABS and Aluminium Terminal Boxes with and without per-mounted terminals.

Connection technology



IP65 sensor connection cables and junction boxes for industrial automation.

Control Stations



Heavy duty PBT and Aluminium Push Button Boxes.

CellTec Pty Ltd

8 Agosta Drive
Laverton North
Victoria, Australia 3026

Phone: +61 3 8360 8533
Fax: +61 3 8360 8544
E-mail: sales@celltec.com.au

CellTec Pty Ltd makes no warranties for the accuracy or currency of content and reserves the right to modify or change content and specifications without prior notice. Copying and reprinting of any kind is prohibited.
© 2013 CellTec Pty. Ltd.