



## PM 4-300 / PM 4-300V



### Passive deflecting mirrors for 4-beam Multiple light beam safety devices

The PM 4-300 and PM 4-300V are each designed for use as the deflecting mirror unit for ROBUST Multiple light beam safety devices RRT 44 and RRT 24. The integrated, optically aligned mirror system ensures simple mounting and alignment, substantially decreasing the start-up time as compared with single mirrors. Used in combination with ROBUST Multiple light beam safety devices, **PM 4-300** is suited for sensing zone widths of up to 2,5 m. The integrated mirror system is able to tolerate deviations in vertical alignment.

With its expanded mirror system, the **PM 4-300V** used in combination with ROBUST Multiple light beam safety devices can handle sensing zone widths of up to 8 m. The V-mirror system tolerates not only vertical but also axial deviations in alignment.

### Areas of application

In combination with 4-beam Multiple light beam safety devices ROBUST RRT 24 and RRT 44 for safeguarding danger zones around automated production cells and for safeguarding access to industrial robots.



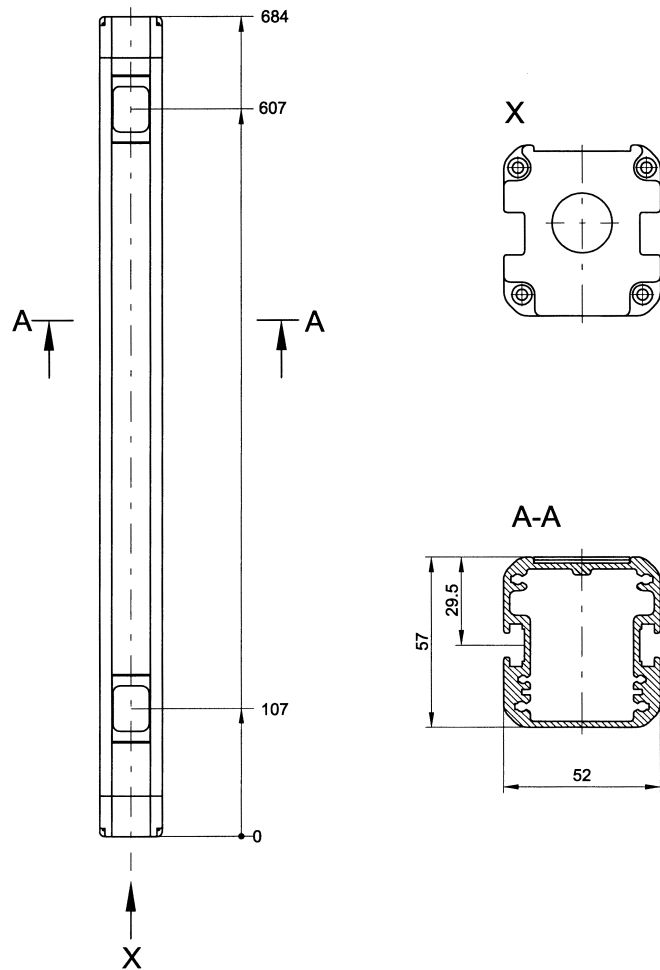
### Leuze lumiflex GmbH + Co. KG

Liebigstraße 4  
D-82256 Fürstenfeldbruck, Germany  
Tel. +49 - (0) 81 41-5350-0  
Fax +49 - (0) 8141-53 50-190  
e-mail: lumiflex@leuze.de  
www.leuze.de

## Advantages

- Easy alignment due to integrated, optically aligned mirror system
- Ranges of up to 2,5 m (PM 4-300) or 8 m (PM 4-300V)
- Enclosed profile housing prevents contamination of and damage to the mirrors
- Adjustable M6 sliding brackets for fast and easy mounting
- PM 4-300 tolerates vertical deviations in alignment
- PM 4-300V tolerates both vertical and axial deviations in alignment

## Dimensional Drawings



## Order Details

### Order Numbers

Type	Order No.
Passive deflecting mirror PM 4-300	50029570 *
Passive deflecting mirror PM 4-300V	909663 *

\* 2 standard mounting brackets, 2 M6 sliding brackets and mounting screws included in the scope of supply.

## Accessories

### Order Numbers

Type	Order No.
Swivelling mount with absorption of vibration (2 pieces per unit necessary)	560300
Mounting column UDC 1600 (height 1660 mm)	549816