



PM 2-500/PM 2-500V



Passive deflecting mirrors for 2-beam Multiple light beam safety devices

The PM 2-500 and PM 2-500V are each designed for use as the deflecting mirror unit for ROBUST Multiple light beam safety devices RRT 42, RRT 22 and the COMPACTplus Muting Transceiver CPRT-m. The integrated, optically aligned mirror system ensures simple mounting and alignment, substantially decreasing the start-up time as compared with single mirrors.

Used in combination with ROBUST Multiple light beam safety devices, **PM 2-500** is suited for sensing zone widths of up to 2,5 m. The integrated mirror system is able to tolerate deviations in vertical alignment.

With its expanded mirror system, the **PM 2-500V** used in combination with ROBUST Multiple light beam safety devices can handle sensing zone widths of up to 8 m. The maximum operating range together with CPRT-m amounts to 6.5 m. The V-mirror system tolerates not only vertical but also axial deviations in alignment.



Leuze lumiflex GmbH + Co. KG

Liebigstraße 4
D-82256 Fürstentfeldbruck, Germany
Tel. +49 - (0) 81 41-5350-0
Fax +49 - (0) 8141-53 50-190
e-mail: lumiflex@leuze.de
www.leuze.de

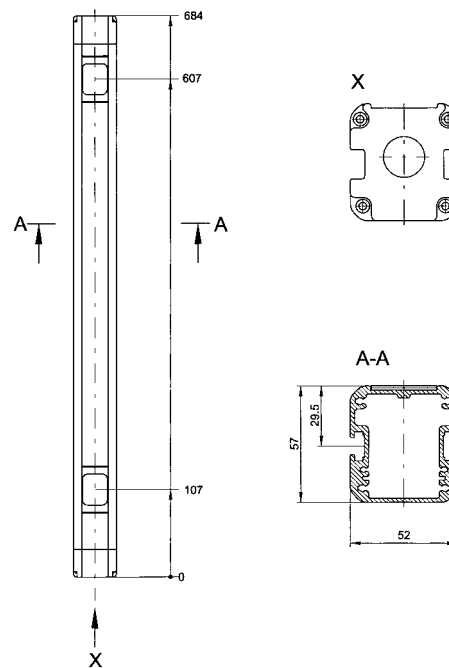
Areas of application

In combination with the 2-beam Multiple light beam safety devices ROBUST RRT 22, RRT 22.1, RRT 22.2, RRT 42 and COMPACTplus Muting Transceiver CPRT-m for safeguarding access as well as for safeguarding danger zones, e.g. at palletizing systems and in warehouse and conveyor technology.

Advantages

- Easy alignment due to integrated, optically aligned mirror system
- Operating ranges of 0.5 m - 2.5 m (PM 2-500) or 1.5 m - 8 m (PM 2-500V)
- Enclosed profile housing prevents contamination of and damage to the mirrors
- Adjustable M6 sliding brackets for fast and easy mounting
- PM 2-500 tolerates vertical deviations in alignment
- PM 2-500V tolerates both vertical and axial deviations in alignment

Dimensional Drawings



Note

Do not use cleaning agents containing solvents to clean the glass covering the light openings. Clean only with a soft cleaning cloth.

Order Details

Order Numbers

Type	Order No.
Passive deflecting mirror PM 2-500	50029088 *
Passive deflecting mirror PM 2-500V	909661 *

* 2 standard mounting brackets, 2 M6 sliding brackets and mounting screws included in the scope of supply.

Accessories

Order Numbers

Type	Order No.
Swivelling mount with absorption of vibration (2 pieces per unit necessary)	560300
Mounting column UDC 1000 (height 1060 mm)	549810
Mounting column UDC 1300 (height 1360 mm)	549813