



## UDC



### Mounting Columns for Light Curtains and Grids

The mounting columns UDC are used in order to mount Leuze lumiflex light grids and light curtains in a freestanding position. Not only do they allow a precise vertical and axial alignment, but they also protect the sensors from damage.

The UDC-1000 can handle 2-beam COMPACT, ROBUST, or AREAL light grids or light curtains with protected heights of up to 900 mm.

The UDC-1300 is designed for 3- or 4-beam light grids or light curtains with protected heights of up to 1200 mm.

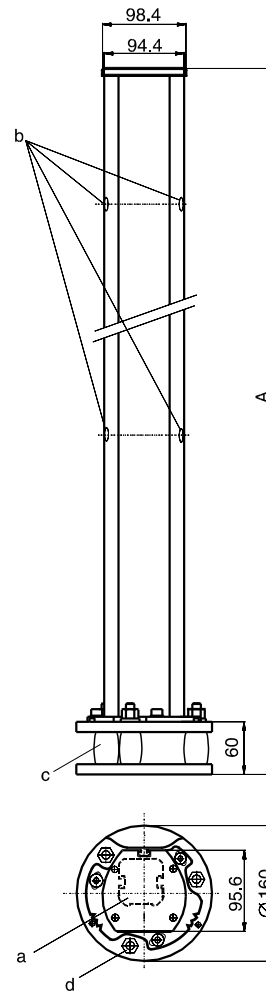
## Advantages

- Special spring elements automatically reset the position in case of mechanical impacts
- Includes a complete assembly kit for both device and floor mounting
- Easy to mount; vertical and axial adjustment can be quickly completed in just a few steps
- Sturdy, attractively designed profile construction

## Areas of Application

Freestanding floor mounting of safety light grids and light curtains.

## Dimensional Drawings



- a = light curtain COMPACT (example)
- b =  $\varnothing$  16 mm (number of drillings is depending on column height)
- c = plastic spring element with automatic reset function
- d = 3 drillings into the ground for dowels, diameter 10 mm (80 mm deep)

### Dimensional Table

Type	Mea. A [mm]
UDC-1000	1060
UDC-1300	1360
UDC-1600	1660
UDC-1900	1960

subject to change without prior notice

601911 - 11/99





## Ordering Information

### Order numbers

Type	Order No.
UDC-1000 *)	549810
UDC-1300 *)	549813
UDC-1600 *)	549816
UDC-1900 *)	549819

- \*) The accessory set (order no. 425069) is necessary in order to mount AREAL.  
The protective mounting profile ECO (order no. see chapter "accessories") is necessary to mount ECO.

## Accessories

### Order numbers

Type	Order No.
Mounting accessories for AREAL	425069
ECO-150 protective mounting profile	349801
ECO-225 protective mounting profile	349802
ECO-300 protective mounting profile	349803
ECO-450 protective mounting profile	349804
ECO-600 protective mounting profile	349806
ECO-750 protective mounting profile	349807
ECO-900 protective mounting profile	349809
ECO-1050 protective mounting profile	349810
ECO-1200 protective mounting profile	349812
LA 78C/R-UDC, laser alignment aid for COMPACT and ROBUST in the UDC column	560030
LA 78A, laser alignment aid for AREAL	520003
Cover plate open on top (for outgoing cable or for oversized units)	346172