

## S40

### Safety Interlock without Guard Locking



### S40 Safety Interlock without Guard Locking

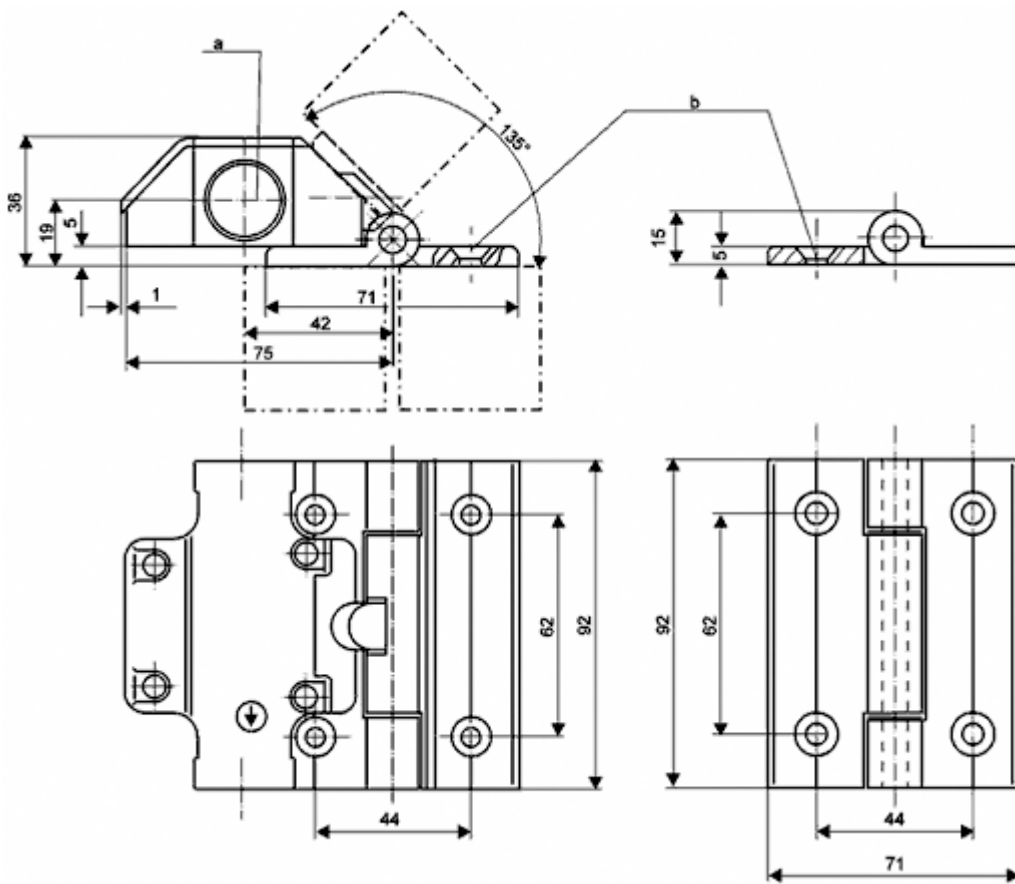
Safety hinge switches, Series S40, are used to protect people in the operating range of industrial machinery and systems. They are designed to monitor the position of pivoting protective devices (e.g. safety doors) by means of a monitoring switch integrated into the hinge.

The Series S40 safety interlocks without guard locking combine the functions of a safety interlock and a door hinge in a single component. The hinge is particularly suited for mounting to 40 mm aluminum profiles, but can also be mounted to square pipes or machine cover panels. A second, identical hinge for door mounting is also included in the scope of delivery.

### Advantages

- BG and UL approval (EN 1088, IEC 947, DIN VDE 0660)
- Considerably easier to mount onto pivoting protective devices
- Simplified construction compared to interlocking devices with elaborate cam discs
- The safety contact in the switch opens as soon as the protective device has reached an opening angle of approx. 3.5° and above
- Protective device can have a maximum opening angle of 135°
- Contact units suitable for integration from Category 1 to 4
- Can be mounted on 40 mm, widely available aluminum profile systems
- Optional mounting hinge sets available for 30, 35 and 45 mm profile systems

**S40**  
Dimensional Drawings

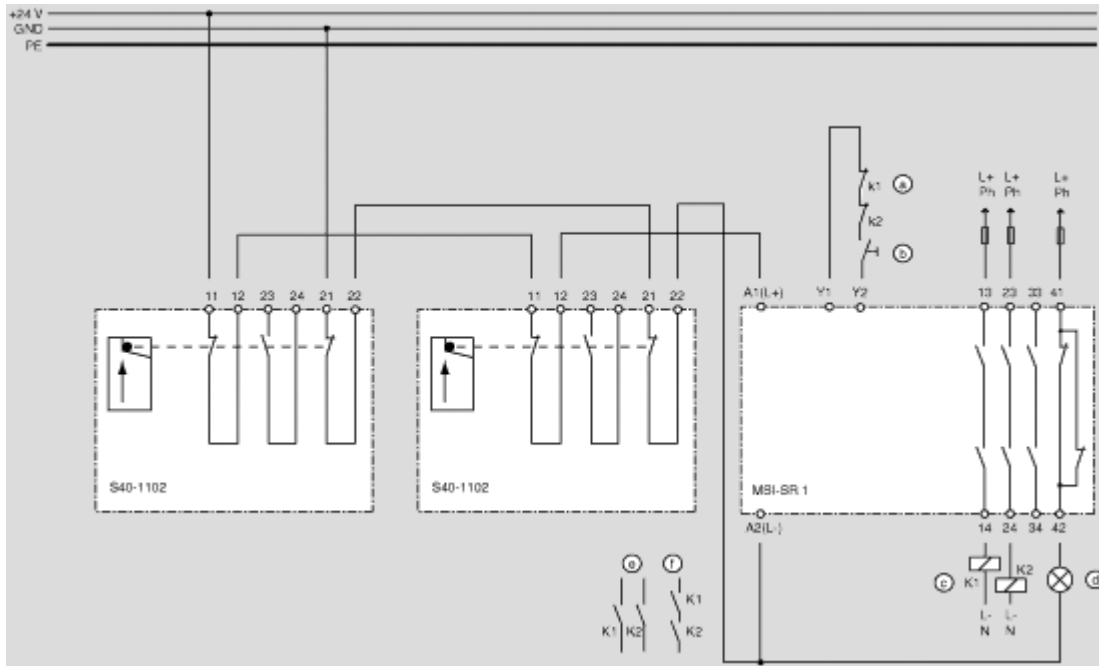


## S40

### Electrical Connection

Application drawing Safety Hinge Switch S40

Safety relay MSI-SR 1 with Safety Hinge Switch S40, circuitry for safety category 3



- a) Feedback circuit for relay monitoring
- b) Start/restart button
- c) Positively guided relay or motor relay, provide suitable spark suppression
- d) Signal lamp 24V/5W
- e) Switching off path 2-channel<sup>\*</sup>
- f) Switching off path 1-channel<sup>\*</sup>

<sup>\*</sup> always use both contacts in the switching off path



Pay attention to the operating manual of the components please.

## S40

### Technical Data

Technical Data	series	
	S40-1102	S40-102
Operating ambient temperature range [°C]	-25...+65	-25...+65
Contact layout normally closed contacts	2	1
Contact layout normally open contacts	1	1
Max. switching frequency [switching cycles/h]	1200	1200
Mechanical serviceable life [switching cycles]	1x10 <sup>6</sup>	1x10 <sup>6</sup>
IP Enclosure rating	IP65	IP65
Nominal voltage of the control circuits [VAC]	250	250
Max. permanent current of the control circuits [A]	2	2