

L50

Safety Interlock with Guard Locking



L50 Safety Interlock with Guard Locking

The Series L50 interlocking devices with an enclosure rating that surpasses IP 67 are oil- and gasoline-resistant and can withstand even hostile ambient conditions. They are available in a spring-operated version for personnel protection and in a magnet power-operated version for machine protection.

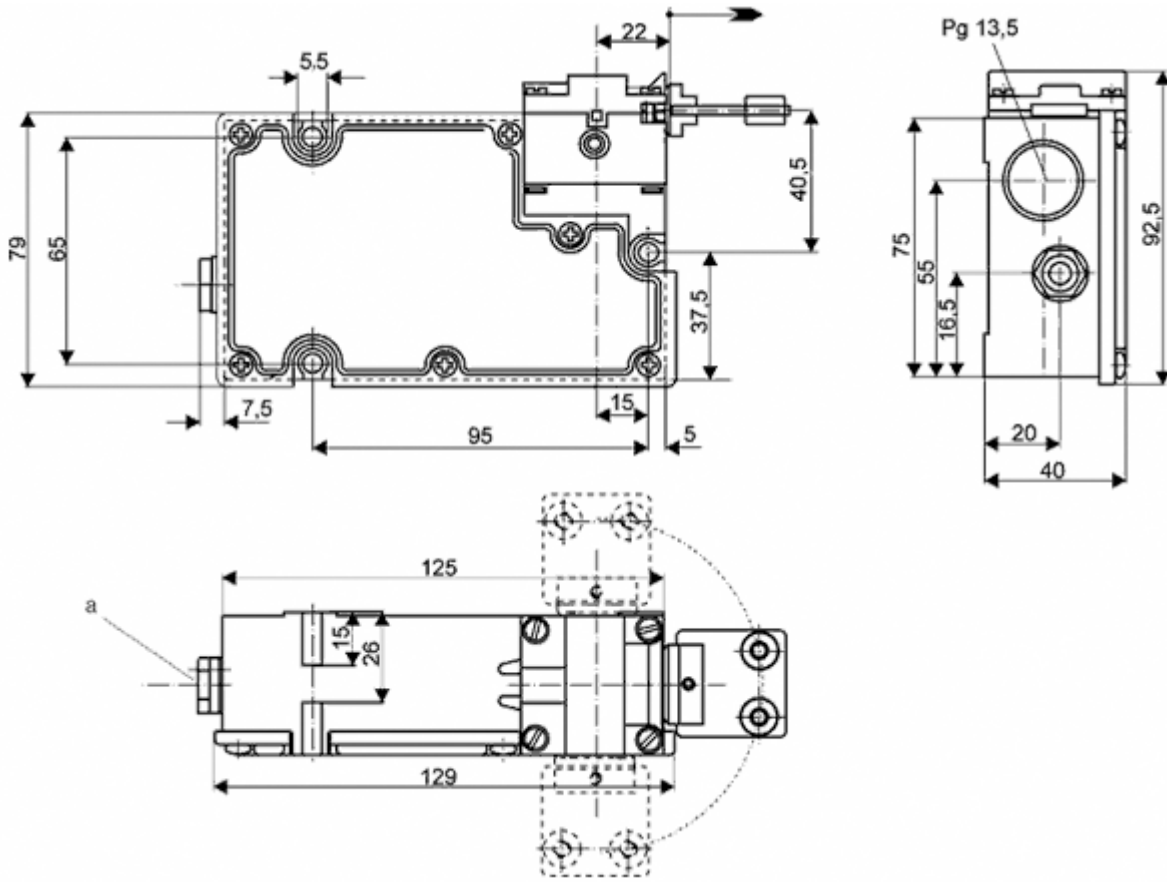
With the contact unit, the locking mechanisms can be integrated in compliance with safety interlocks up to Category 4 in accordance with EN 954-1. The heavy-duty safety interlocks with guard locking of Series L50 are available in the spring power-operated version L50-F/.. for personnel protection and in the magnet power-operated version L50-M/.. for machine protection.

Advantages

- BG and UL approval (EN 1088, IEC 947, DIN VDE 0660)
- Heavy-duty construction, suited for use under hostile ambient conditions
- Universally usable due to 3 approach directions
- Funnel shaped entry for the actuator
- Ball lock in the actuating head for fixing the actuator
- Actuating heads can be displaced 3 x 90°
- Variable actuating radius possible with radial and telescope actuator
- Safety mechanism for preventing unwanted closing, contact unit up to Category 4
- Manual auxiliary release of the guard locking is possible no matter
- Spring power-operated version L50-F/.. for personnel protection
- Magnet power-operated version L50-M/.. for machine protection

L50

Dimensional Drawings



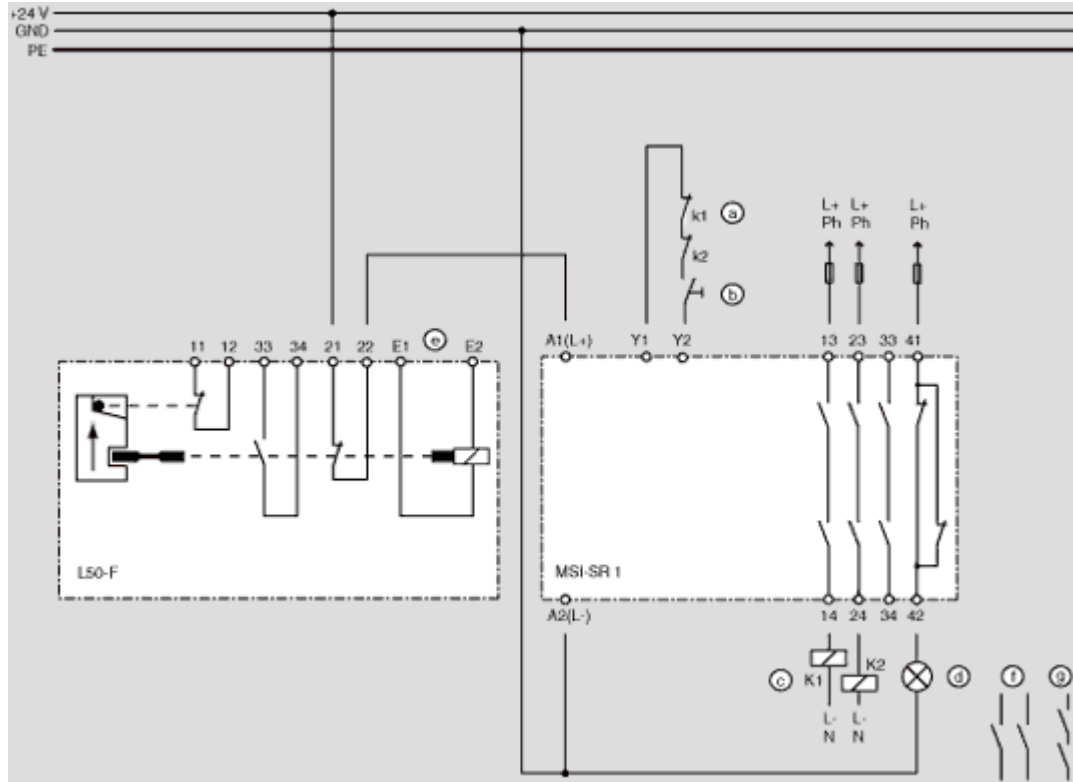
L50

Electrical Connection

Application drawing Safety Interlock with Guard Locking L50

Safety relay MSI-SR1 with Safety Interlock with Guard Locking L50, circuitry for safety category 1 (2).

Applications for safety category 2 require the safety function to be tested at appropriate intervals by actuating the safety door.



- a) Feedback circuit for relay monitoring
 - b) Start/restart button
 - c) Positively guided relay or motor relay, provide suitable spark suppression
 - d) Signal lamp 24V/5W
 - e) separate magnet supply voltage (24V DC) via time delay component or standstill monitor component
 - f) Switching off path 2-channel^{*}
 - g) Switching off path 1-channel^{*}
- ^{*} always use both contacts in the switching off path



Pay attention to the operating manual of the components please.

L50**Technical Data**

Technical Data	series					
	L50-M	L50-M/W	L50-M/C	L50-F	L50-F/W	L50-F/CS
Operating ambient temperature range [°C]	-25...80	-25...80	-25...80	-25...80	-25...80	-25...80
Contact layout normally closed contacts	1+1	1+1	1+1	1+1	1+1	1+1
Contact layout normally open contacts	1	1	1+1	1	1	1+1
Guard Locking: M - magnetic, F - spring power	M	M	M	F	F	F
Mechanical serviceable life [switching cycles]	2x10 ⁶	2x10 ⁶	2x10 ⁶	2x10 ⁶	2x10 ⁶	2x10 ⁶
IP Enclosure rating	>IP67	>IP67	>IP67	>IP67	>IP67	>IP67
Actuating force for insertion [N]	10	10	10	10	10	10
Actuating force for withdrawal [N]	20	20	20	20	20	20
Nominal voltage of the control circuits [VAC]	380	380	380	380	380	380
Max. permanent current of the control circuits [A]	10	10	10	10	10	10
Nominal voltage of the locking circuit [VDC]	24	24	24	24	24	24