

L30

Safety Interlock with Guard Locking



L30 Safety Interlock with Guard Locking

Due to their slim and narrow design, the L30 Series is particularly well-suited for use with revolving doors mounted on commercial aluminum profiles. The interlocking devices L30 are available in a spring-operated version for personnel protection and in a magnet power-operated version for machine protection. A mechanism for preventing unwanted closing and an auxiliary release mechanism are additional advantages of these safety components.



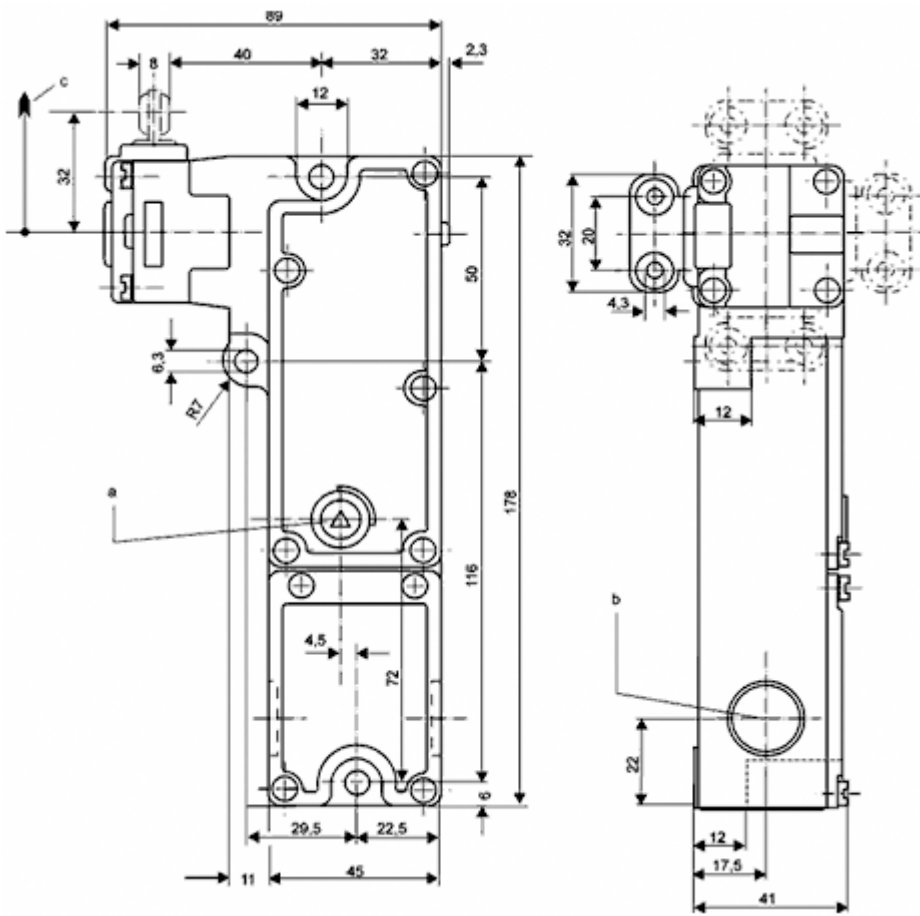
A constructive feature ensures that the locking function does not take effect until the protective door is closed. This makes it impossible to lock when the protective device is open. With the contact unit, the locking mechanisms can be integrated in compliance with safety standards up to Category 4 in accordance with EN 954-1.

Advantages

- BG and UL approval (EN 1088, IEC 947, DIN VDE 0660)
- Slim L-shaped design for optimum integration into rotating protective devices based on profile systems
- universally usable due to 4 approach directions
- Actuating head can be displaced 4 x 90°
- Funnel-shaped entry with a auto-centering effect
- Transverse sliding adapter plate for fast, easy mounting on revolving doors with a profile system assembly
- Dust-proof flap prevents dirt particles from entering when the protective device is open
- safety mechanism for preventing unwanted closing, contact unit up to Category 4
- Manual auxiliary release of the guard locking is possible no matter what state the guard locking mechanism (i.e. the solenoid) is in
- spring power-operated version L30-F/.. for personnel protection
- magnet power-operated version L30-M/.. for machine protection

L30

Dimensional Drawings



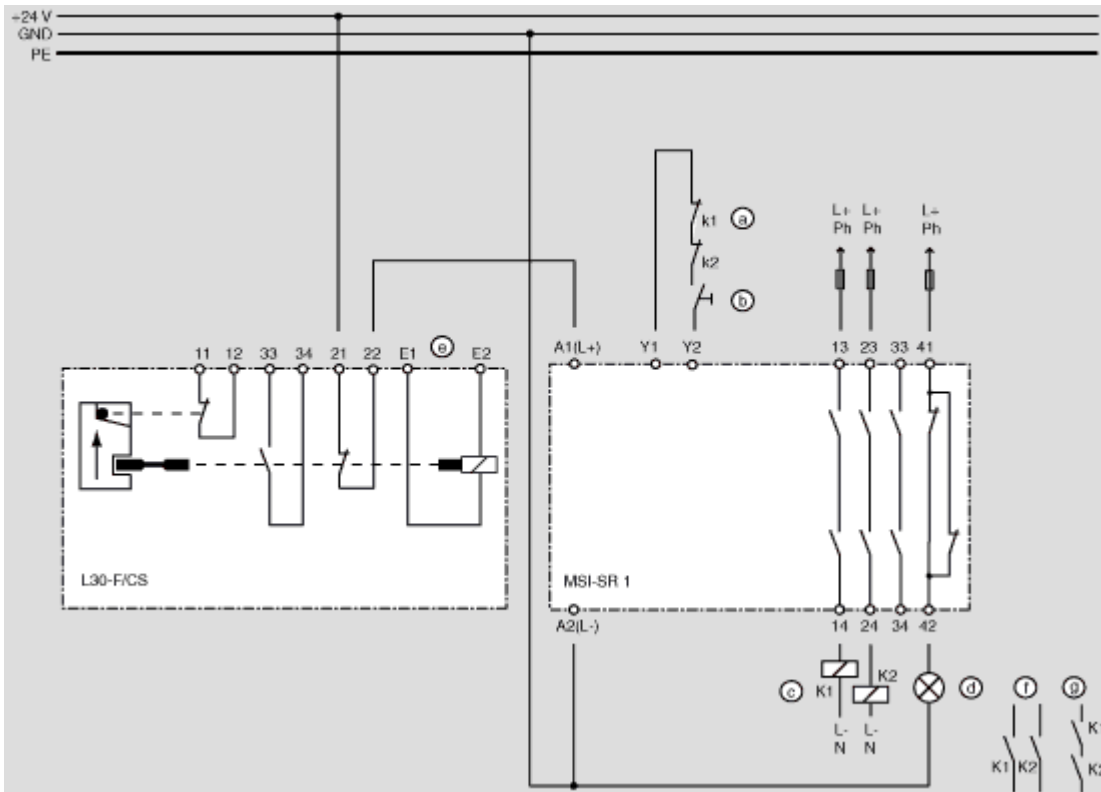
L30

Electrical Connection

Application drawing Safety Interlock with Guard Locking L30

Safety relay MSI-SR1 with Safety Interlock with Guard Locking L30, circuitry for safety category 1 (2).

Applications for safety category 2 require the safety function to be tested at appropriate intervals by actuating the safety door.



- a) Feedback circuit for relay monitoring
- b) Start/restart button
- c) Positively guided relay or motor relay, provide suitable spark suppression
- d) Signal lamp 24V/5W
- e) separate magnet supply voltage (24V DC) via time delay component or standstill monitor component
- f) Switching off path 2-channel^{*}
- g) Switching off path 1-channel^{*}

^{*} always use both contacts in the switching off path



Pay attention to the operating manual of the components please.

L30**Technical Data**

Technical Data	series				
	L30-M/C	L30-M/E	L30-M/G	L30-F/CS	L30-F/ES
Operating ambient temperature range [°C]	0...+50	0...+50	0...+50	0...+50	0...+50
Contact layout normally closed contacts	1+1	2	1	1+1	2
Contact layout normally open contacts	1	1	1+1	1	1
Guard Locking: M - magnetic, F - spring power	M	M	M	F	F
Max. switching frequency [switching cycles/h]	120	120	120	120	120
Mechanical serviceable life [switching cycles]	2x10 ⁶	2x10 ⁶	2x10 ⁶	2x10 ⁶	2x10 ⁶
IP Enclosure rating	IP67	IP67	IP67	IP67	IP67
Actuating force for insertion [N]	10	10	10	10	10
Actuating force for withdrawal [N]	20	20	20	20	20
Max. locking force [N]	1750	1750	1750	1750	1750
Nominal voltage of the control circuits [VAC]	250	250	250	250	250
Max. permanent current of the control circuits [A]	8	8	8	8	8
Nominal voltage of the locking circuit [VDC]	24	24	24	24	24