

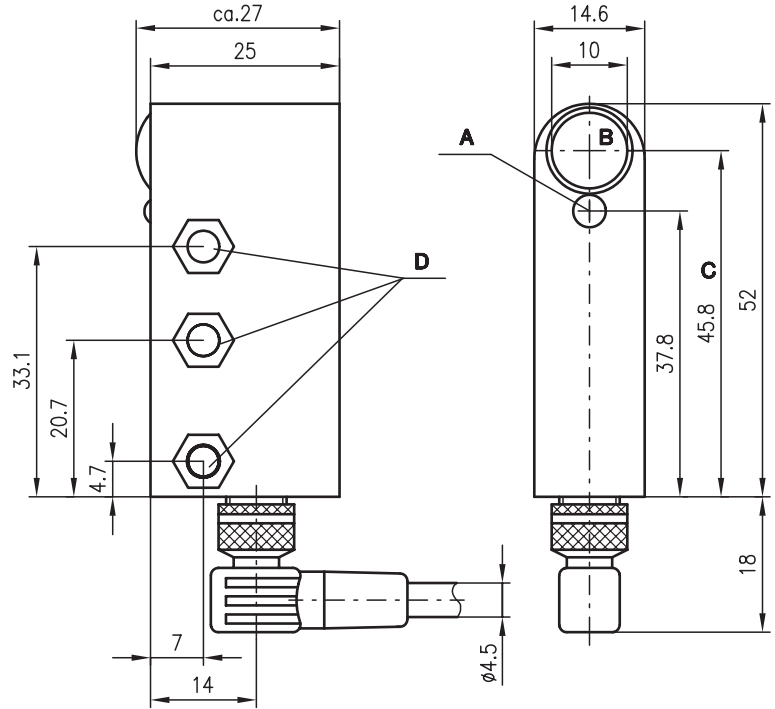


LS 763

Protective throughbeam photoelectric sensor



Dimensioned drawing



8m

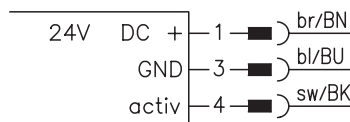


- Protective throughbeam photoelectric sensor with high performance reserve in infrared light
- Activation input for testing and interlinking
- Compact construction with shock-resistant metal housing and glass optics
- LED indicator in transmitter and receiver for function monitoring
- PNP transistor output for PLC applications
- Connection via M8 connector

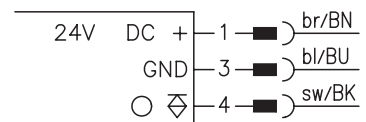
- A Indicator diode
- B Transmitter/receiver
- C Optical axis
- D Flat nut M4 for insertion

Electrical connection

Transmitter



Receiver



Accessories:

(available separately)

- Mounting system (BT 763)
- Connection cable 5m
 - Axial BK7 KB-003-5000-3A
 - Angled BK7 KB-003-5000-3
- Test-monitoring unit:
 - TNT 32 (Part No. 500 20476)
 - TNT 33 (Part No. 500 28158)
 - TNT 34 (Part No. 500 81023)
 - TNT 35 (Part No. 500 33058)
 - TMC 66 (Part No. 500 82121)

We reserve the right to make changes • SLS_a02e.fm





Specifications

Optical data

Typ. operating range limit ¹⁾	0 ... 8m
Operating range ²⁾	0 ... 6m
Light source	LED (modulated light)
Wavelength	880nm
Optics diameter	10mm
Shadowing item	8mm
Eff. angle of radiation	max. ± 4° acc. to prEN 50100-2 (edition 08/94)

Timing

Switching frequency	100Hz
Response time	min. 5ms

Electrical data

Operating voltage U_B ³⁾	24VDC ± 15%
Residual ripple	≤ 10% of U_B (peak/peak)
Bias current	receiver ≤ 15mA transmitter ≤ 20mA
Switching output	PNP transistor output
Function characteristics	light switching
Signal voltage high/low	≥ ($U_B - 2V$) / ≤ 2V
Output current	max. 100mA

Indicators

Receiver	
LED red	light path interrupted
LED green	light path free
Transmitter	
LED yellow	transmitter ON

Mechanical data

Housing	diecast zinc, electroplated
Optics	mineral glass
Weight	130g
Connection type	M8 connector

Environmental data

Ambient temp. (operation/storage)	-20°C ... +60°C / -30°C ... +70°C
Protective circuit ⁴⁾	2, 3
Protection class	IP 65
Standards applied	IEC 90647-5-2

Options

Activation input activ	
Transmitter active/not active	≥ 20V / ≤ 2V or not connected
Activation/disable delay	≤ 0.5ms
Input resistance	10kΩ ± 10%

- 1) Typ. operating range limit: max. attainable range without performance reserve
 2) Operating range: recommended range with performance reserve
 3) Functional extra/low voltage with reliable disconnection or protective extra-low voltage (VDE 0100/T 410)
 4) 2=polarity reversal protection, 3=short circuit protection

Order guide

	Designation	Part No.
Transmitter and receiver	LS 763/4.8 L8	
Transmitter	LS 763/2.8 Se L8	500 81024
Receiver	LS 763/4 E L8	500 81025

Tables

Diagrams

Remarks

The protective throughbeam photoelectric sensor is a contactless active protective device only in connection with a safety-relevant control system, in which the cyclical testing of transmitter and receiver is carried out according to EN 61496-1, category 2 (testing).

The power supply unit used to operate the photoelectric sensor has to be able to compensate for changes and interruptions of the supply voltage acc. to EN 61496-1. Minimum blackening object: Ø8mm.