

SLSR 8

Through-beam Safety Light Barriers (AOPD type 2)



SLSR 8

In conjunction with a test monitoring unit, such as for instance the TNT 35 or MSI, this opto-sensor with test input constitutes an active optoelectronic protective device of type 2.

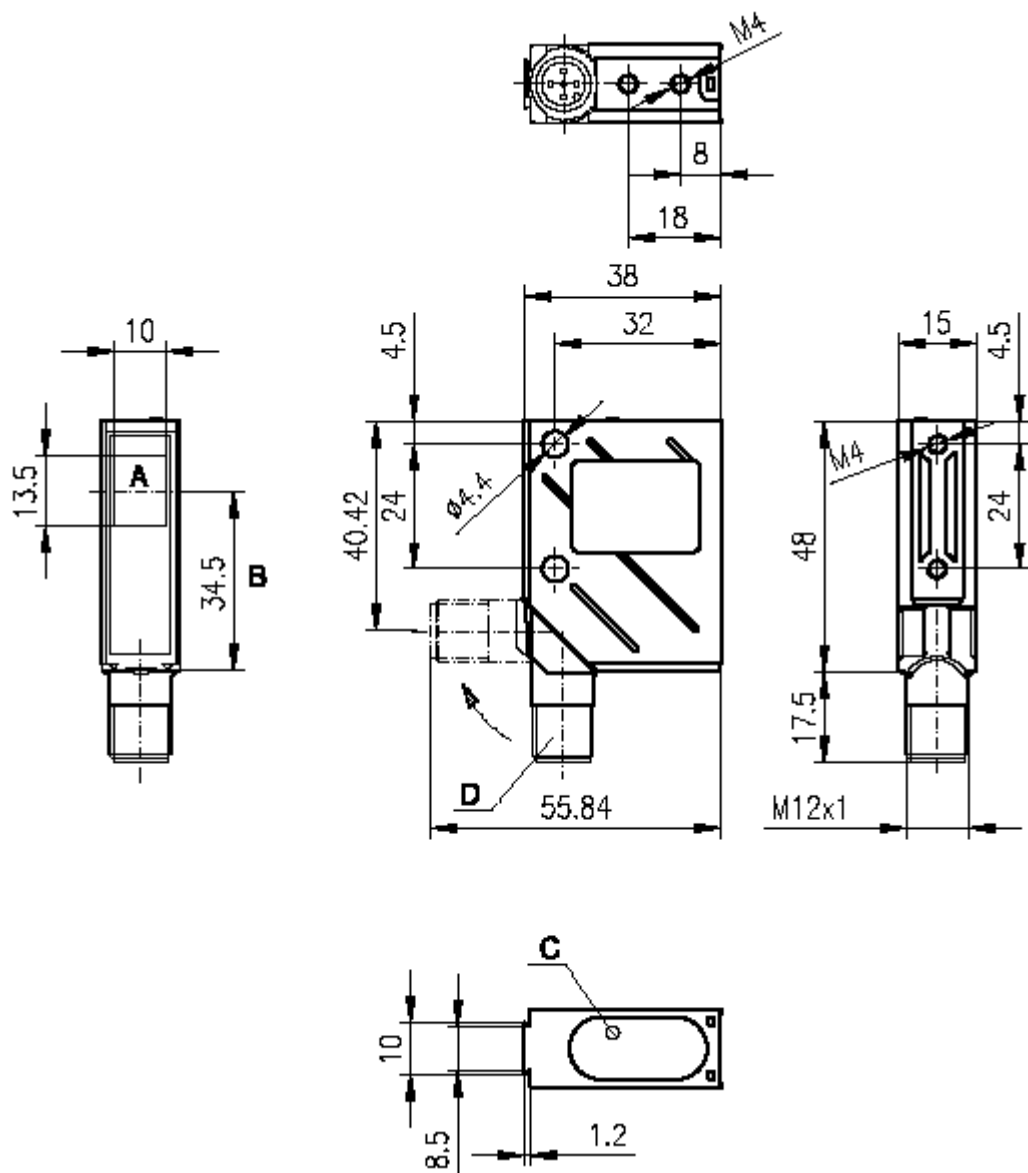
Advantages

- A²LS - active suppression of extraneous light
- Push-pull switching outputs
- M12 turning connector
- Visible red light

SLSR 8

Dimensional Drawings

SLSR 8/66.8-S12



- A) Transmitter/receiver
- B) Optical axis
- C) LED yellow
- D) 90° turning connector

SLSR 8

Electrical Connection

Sample connection SLSR 8/66.8-S12

Transmitter

Receiver



SLSR 8

Technical Data

Optical data	
Typ. operating range limit ¹⁾	14 m
Operating range ²⁾	10 m
Light source	LED (modulated light)
Wavelength	660nm (visible red light)
Timing	
Switching frequency	250 Hz
Response time	2 ms
Delay before start-up	≤ 100 ms
Electrical data	
Operating voltage U _B	10 ... 30 VDC
Residual ripple	≤ 15% of U _B
Bias current	≤ 35 mA
Switching output/function	2 push-pull switching outputs ³⁾ pin 2: PNP dark switching, NPN light switching pin 4: PNP light switching, NPN dark switching
Signal voltage high/low	≥ (U _B -2V)/≤ 2V
Output current	max. 100mA
Sensitivity	not adjustable
Indicators	
LED yellow, receiver	light path free
LED yellow flashing, receiver	light path free, no performance reserve
Mechanical data	
Housing	metal
Optics cover	glass
Weight (plug/cable)	70g/140g
Connection type	M12 connector, 5-pin (turning)
Environmental data	
Ambient temp. (operation/storage)	-20°C ... +60°C/-40°C ... +70°C
Protective circuit ⁴⁾	2, 3
VDE safety class ⁵⁾	II, all-insulated
Protection class ⁶⁾	IP67
LED class	1 (acc. to EN 60825-1:1994 +A1:2002 +A2:2001)
Standards applied	IEC 60947-5-2

- 1) Typ. operating range limit: max. attainable range without performance reserve
2) Operating range: recommended range with performance reserve
3) The push-pull switching outputs must not be connected in parallel
4) 2=polarity reversal protection, 3=short-circuit protection for all outputs
5) Rating voltage 250VAC
6) In stop position of the turning connector (turning connector locked)

Remarks:

The protective throughbeam photoelectric sensor is a contactless active protective device only in connection with a safety-relevant control system, in which the cyclical testing of transmitter and receiver is carried out according to EN 61496-1, category 2 (testing).

The power supply unit used to operate the photoelectric sensor has to be able to compensate for changes and interruptions of the supply voltage acc. to EN 61496-1. Minimum blackening object: Ø13mm.