



GS 12

Forked photoelectric sensors

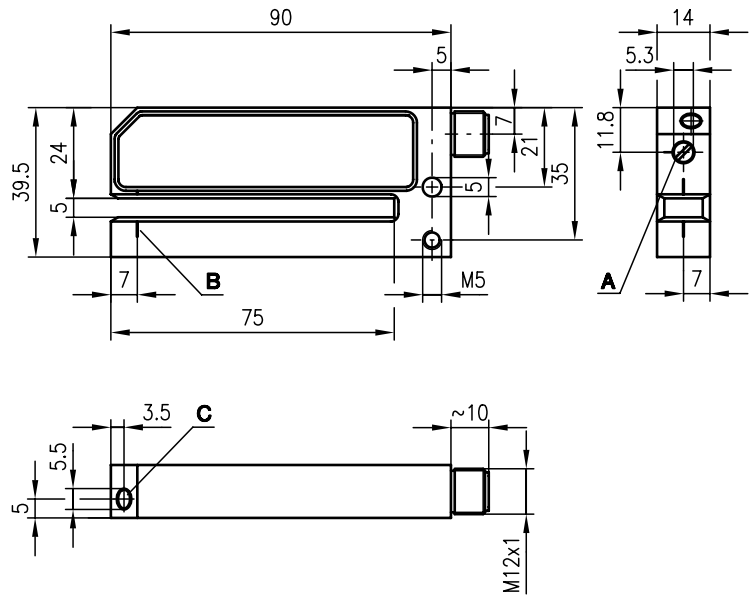


5mm



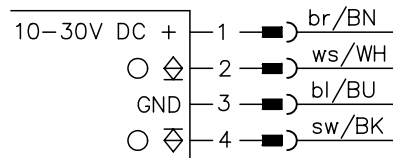
- Fast amplifier with high switching frequency for detection of short events (e.g. gaps between labels)
- Universal application due to short-circuit and polarity reversal protected PNP and NPN switching output, with M12 connector
- Robust aluminium housing with bevelled inlet edges, protection class IP 65
- Indicator diode with large viewing area displays the switching state

Dimensioned drawing



- A Sensitivity adjustment
- B Optical axis
- C Indicator diode

Electrical connection



We reserve the right to make changes • GS\_a12e.fm



Accessories:

(available separately)

- M12 connectors (KD ...)



## Specifications

### Optical data

Mouth width 5mm

### Timing

Switching frequency 5000Hz  
Response time 0.1ms  
Delay before start-up  $\leq 200$ ms

### Electrical data

Operating voltage  $U_B$  <sup>1)</sup> 10 ... 30VDC (incl. residual ripple)  
Residual ripple  $\leq 15\%$  of  $U_B$   
Bias current  $\leq 40$ mA  
Switching output 1 PNP transistor output  
1 NPN transistor output  
Function characteristics light switching  
Signal voltage high/low  $\geq (U_B - 2V) / \leq 2V$   
Output current 250mA  
Sensitivity range selection using 3-turn potentiometer

### Indicators

LED yellow light path free

### Mechanical data

Housing aluminium, anodised  
Weight 120g  
Connection type M12 connector

### Environmental data

Ambient temp. (operation/storage)  $-20^\circ\text{C} \dots +60^\circ\text{C} / -30^\circ\text{C} \dots +70^\circ\text{C}$   
Protective circuit <sup>2)</sup> 1, 2  
VDE safety class III  
Protection class IP 65

1) Functional extra-low voltage with reliable disconnection or protective extra-low voltage (VDE 0100/T 410)

2) 1=polarity reversal protection, 2=short-circuit protection for all outputs

## Tables

## Diagrams

## Order guide

Designation	Part No.
GS 12/24 GL	500 22724

## Remarks