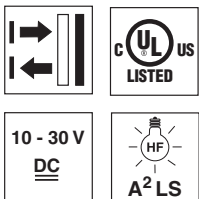




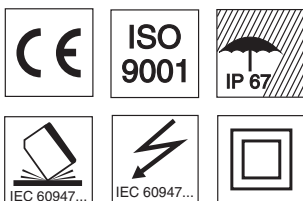
HRT 96

Diffuse reflection light scanner with background suppression



100 ... 1800 mm
100 ... 1200 mm

- Scanner with adjustable background suppression in visible red light or infrared light
- Robust metal housing with glass cover or plastic housing, protection class IP 67 for industrial application
- Complementary outputs, scanning range adjustment and delay before start-up for optimal adaptation to the application
- Connection via M12 connector or terminal compartment
- Multiple options with switching delays, activation input and optics heating for use at low temperatures

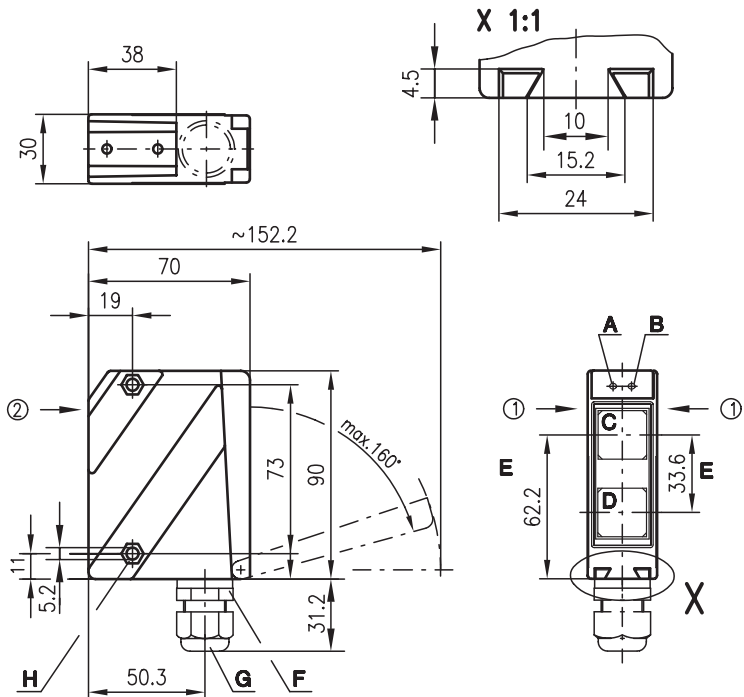


Accessories:

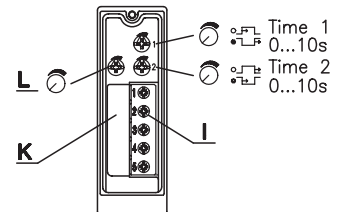
(available separately)

- Mounting systems (BT 96, BT 96.1, UMS 96, BT 450.1-96)
- M12 connectors (KD ...)

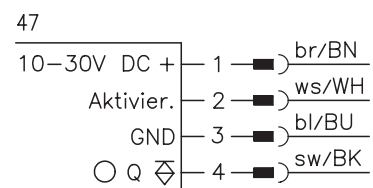
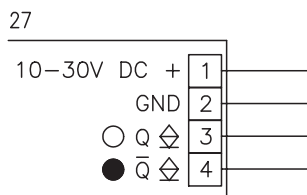
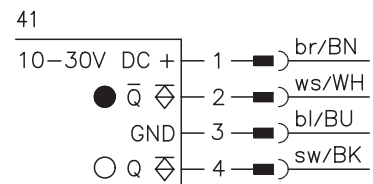
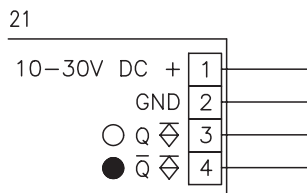
Dimensioned drawing



- A Indicator diode green
 - B Indicator diode yellow
 - C Transmitter
 - D Receiver
 - E Optical axis
 - F Device plug M12x1
 - G Screwed cable gland M16x1.5 for Ø 5 ... 10mm
 - H Countersinking for SK nut M5, 4.2 deep
 - I Connection terminals
 - K Cable entry
 - L Scanning range adjustment
- Preferred entry direction for objects ① + ②



Electrical connection



We reserve the right to make changes • 96_d01e.fm

Specifications

Optical data

Typ. scanning range limit (white 90%) ¹⁾
 Scanning range ²⁾
 Adjustment range
 Light source
 Wavelength

Infrared light

100 ... 1800mm
 see table
 150 ... 1200mm
 LED (modulated light)
 880nm

Red light

100 ... 1200mm
 see table
 100 ... 800mm
 LED (modulated light)
 660nm

Timing

Switching frequency 300Hz
 Response time 1.67ms
 Delay before start-up ≤ 200ms

Electrical data

Operating voltage U_B 10 ... 30VDC (incl. residual ripple)
 Residual ripple ≤ 15% of U_B
 Bias current ≤ 35mA, ≤ 75mA with optics heating
 Switching output PNP transistor
 Function characteristics light or dark switching (reversible)
 Signal voltage high/low ≥ ($U_B - 2V$) / ≤ 2V
 Output current max. 100mA

Indicators

LED green ready
 LED yellow reflection

Mechanical data

Housing diecast zinc
 Optics cover glass
 Weight 380g
 Connection type terminals or M12 connector

Environmental data

Ambient temp. (operation/storage) -20°C ... +60°C / -40°C ... +70°C
 Protective circuit ³⁾ 1, 2, 3, 4
 VDE safety class ⁴⁾ II, all-insulated
 Protection class IP 67
 LED class 1 (acc. to EN 60825-1:1994 +A1:2002 +A2:2001)
 Standards applied IEC 60947-5-2

Options

Optics heating for temperature changes, prevents fogging
Low temperature to -35°C
Switching delay (slow oper./release) 0 ... 10s (separately adjustable)
Activation input activ
 Transmitter active/not active ≥ 8V / ≤ 2V
 Activation/disable delay ≤ 0.5ms
 Input resistance 47KΩ ± 10%

- 1) Typ. scanning range limit: max. attainable range without performance reserve
- 2) Scanning range: recommended range with performance reserve
- 3) 1=transient protection, 2=polarity reversal protection, 3=short circuit protection for all outputs, 4=interference blanking
- 4) Rating voltage 250VAC

Remarks

- With the set scanning range, a tolerance of the upper scanning range limit is possible depending on the reflection properties of the material surface.
- The diffuse reflection light scanner is also available with integrated AS-i chip for direct connection to the AS-i system.

Order guide

| Selection table | | Order code → | | | | | | | | | |
|-----------------|--------------------------|---------------------------------------------|---------------------------------------------|---------------------------------------------|---------------------------------------------|----------------------------------------------|----------------------------------------------|----------------------------------------------|----------------------------------------------|----------------------------------------------|--|
| Equipment ↓ | | HRT 96M/P-1630-800-41 Part No. 500 80047 | HRT 96M/P-1636-800-41 Part No. 500 32127 | HRT 96M/P-1640-800-21 Part No. 500 25124 | HRT 96M/P-1640-800-41 Part No. 500 25126 | HRT 96M/P-1610-1200-21 Part No. 500 25116 | HRT 96M/P-1610-1200-41 Part No. 500 25118 | HRT 96M/P-1620-1200-21 Part No. 500 25114 | HRT 96M/P-1620-1200-41 Part No. 500 61102 | HRT 96M/N-1606-1200-27 Part No. 500 40358 | |
| Light source | red light (800mm) | ● | ● | ● | ● | | | | | | |
| | infrared light (1200mm) | | | | | ● | ● | ● | ● | ● | |
| Connection | terminals | | | ● | | ● | | ● | | ● | |
| | M12 connector | ● | ● | | ● | | ● | | ● | | |
| Features | optics heating/low temp. | | ● | | | | | ● | ● | ● | |
| | switching delay | | | ● | ● | ● | ● | ● | ● | | |
| | activation input | | | ● | ● | ● | ● | ● | ● | | |
| | NPN switching output | | | | | | | | | ● | |

Tables

Red light

| | | | |
|---|-----|-----|------|
| 1 | 100 | 800 | 1200 |
| 2 | 100 | 770 | 1140 |
| 3 | 100 | 730 | 1050 |

Infrared light

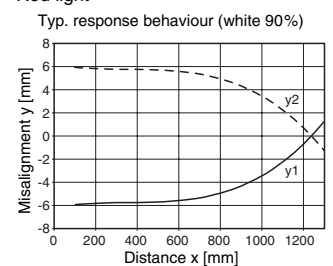
| | | | |
|---|-----|------|------|
| 1 | 100 | 1200 | 1800 |
| 2 | 100 | 1100 | 1600 |
| 3 | 100 | 1000 | 1350 |

| | |
|---|-----------|
| 1 | white 90% |
| 2 | grey 18% |
| 3 | black 6% |

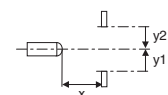
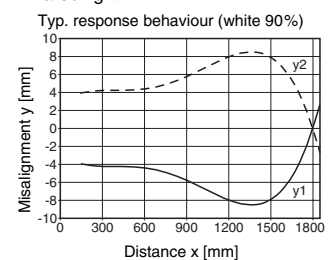
□ Scanning range [mm]
 ■ Typ. scanning range limit [mm]

Diagrams

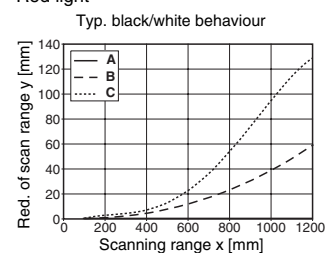
Red light



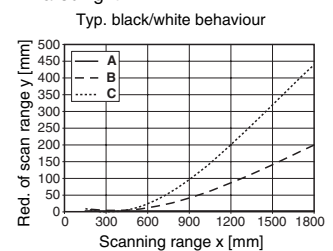
Infrared light



Red light



Infrared light



A white 90%
 B grey 18%
 C black 6%