

4 digit LCD module 166



- 4 digit LCD totalizer panel
- Removable housing for special applications
- Power supply from replaceable lithium battery, 3 ... 4 years at 20 °C
- Max. count frequency 18 Hz by contact

Applications

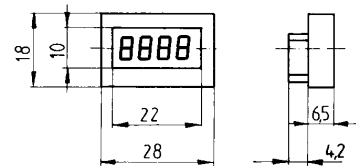
Devices without power supply
 easy counting
 self powered device
 vending machines
 gaming machines
 printers and copiers

Technical data:

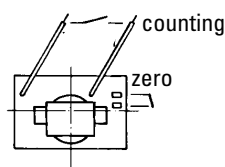
Power supply:	1,5 V lithium battery Type 386 or SR 43	Interference emissions:	EN 50081-2/EN 55011 class B
Battery operating life:	3 ... 4 Years at 20 °C	Interference resistance:	EN 6100-6-2 EN 50081-1
Display:	LCD 4 digit, 6 mm high	Working temperature:	0 °C...+50 °C
Count range:	9999 with zero blanking	Storage temperature:	-10 °C...+60 °C
Count input:	Max. count frequency 18 Hz counting by closed contact	Housing:	clear and black
0 reset:	quick removal or the battery or connect the two pins on the back of the unit	Protection:	IP 40
		Weight:	7.5 g
		Electrical connections:	Flying leads 18 cm long

Dimensions:

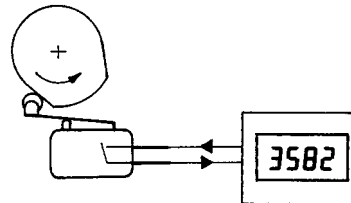
without housing



Flying leads
180 mm long

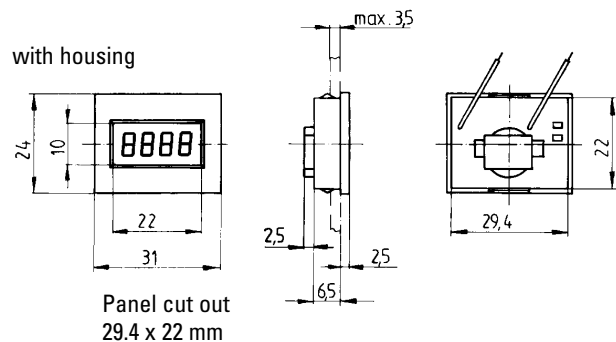


Application



Control with contact

with housing



Order code and delivery specification:

Art.-No.: 0.166.012.830

Delivery specification:

LCD module
 Operating manual

6 digit LCD module 167/168



- 6-digit LCD display counter for panel or PCB mount (removable mounting)
- 3 V DC power supply
- Current consumption <math>< 5 \mu\text{A}</math> (- Inputs TTL/CMOS compatible
- Electrical zero reset

Type 167:

count mode: adding

Type 168:

count mode: adding/subtracting

1 count input

1 direction input

Applications

Simple counting

Position-, length- and distance

measurement, PCB counter

Technical data:

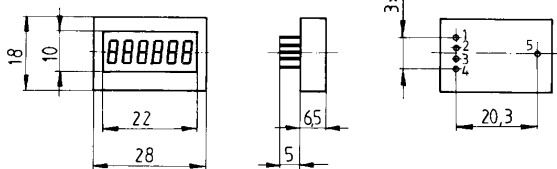
Power supply:	2.6 ... 3.4 VDC
Current consumption:	typical 5 μA , 10 μA at 10 kHz
Display:	LCD, 6 digit, 6 mm high
Count range:	999999
Overflow	
Type 167:	from 999 999 to zero
Type 168:	adding from 999 999 to zero subtracting from zero to 999 999
Count input:	Max. count frequency 10 kHz min. pulse time 50 μs negative triggered (NPN)
0 reset:	min. pulse time 15 ms negative triggered (NPN)

Direction input (Only Type 168): switch to 0 V or negative triggered (NPN)
Open input: count mode adding
Input to zero: 0 V: count mode subtract.

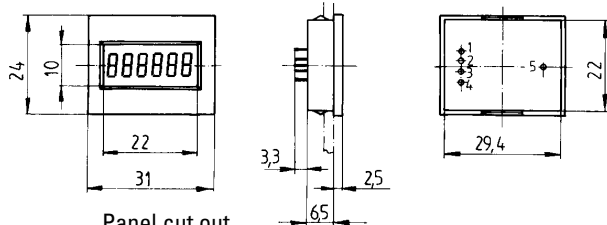
Interference resistance:	EN 50081-1
Interference emissions:	EN 55022 class B
Working temperature:	-10 °C...+60 °C
Storage temperature:	-10 °C...+60 °C
Housing:	clear and black
Protection:	IP 40
Weight:	7.5 g
Electrical connection:	PCB pin \varnothing 0.4 mm

Dimensions:

without housing

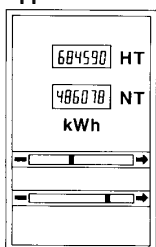


with housing



Panel cut out
29.4 x 22 mm

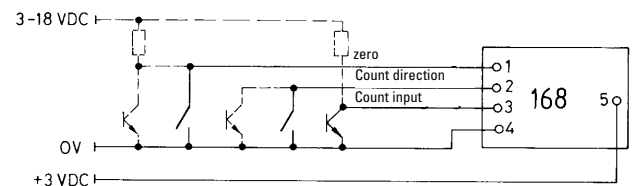
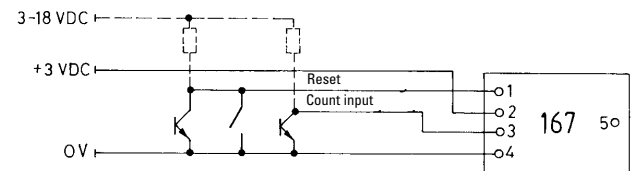
Applications:



kWh counter

3/2005

Connections:



Pin-No.	Function	
	Type 167	Type 168
1	reset	reset
2	+ 3 VDC	Count direction
3	Count input	Count input
4	0 V	0 V
5	0 V	+3 VDC

Order code:

Type 167: 0.167.012.000

Type 168: 0.168.012.000

Delivery specification:

LCD module

Operating manual