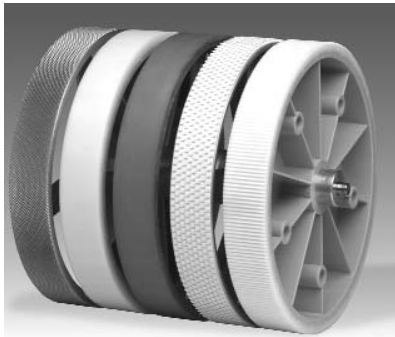


Measuring wheels



- Measuring wheels are utilized in combination with encoders to measure material in the wood-, paper, metal, textile and plastic industry.
- Different diameters to perfectly match with desired accuracy and pulses per revolution of your encoder.
- When selecting a measuring wheel, the first consideration is the type of material to be measured as this serves as the basis for determining the surface finish or coating of the measuring wheel.

Surface of the measured material:

Surface of the measured material:	Recommended profile no.
Plastic e.g. PVC, PE, ...)	4, 5
Paper	4, 5
Cardboard	1, 4, 5
Wood	1, 4, 5
Textile	6, 9, 1
Metals nacked	6
Varnished surfaces	6
Wire	5

Measuring wheels on stock:

8.0000.3211.0004	8.0000.3542.0010
8.0000.3211.0006	8.0000.3542.0012
8.0000.3211.0010	8.0000.3552.0010
8.0000.3241.0006	8.0000.3552.0012
8.0000.3211.0010	8.0000.3562.0007
8.0000.3291.0004	8.0000.3562.0010
8.0000.3291.0006	8.0000.3592.0006
8.0000.3291.0010	8.0000.3592.0010
8.0000.3512.0010	8.0000.3592.0012
8.0000.3542.0007	8.0000.3751.0010

Measuring wheels for metric system:

Measuring wheel	Profile	Coating	Coating hardness	Standard bore [mm] ¹⁾	Measuring width [mm]	Material of wheel body	Weight (appr.) [g]	Wheel No.
0,2 m	1	diamond knurl		6	12	aluminium	40	211
	4	plastic (Hytrel), smooth	85 ... 90	6	12	plastic	35	241
	9	plastic (Hytrel), corrugated	85 ... 90	6	12	plastic	35	291
0,5 m	1	diamond knurl		10	25	aluminium	350	512
	4	plastic (Hytrel), smooth	85 ... 90	10	25	plastic	260	542
	5	plastic (Vulkolan), smooth	85 ... 90	10	25	aluminium	320	552
	6	tufted rubber		10	25	aluminium	320	562
	9	plastic (Hytrel), corrugated	85 ... 90	10	25	plastic	260	592

Measuring wheels for imperial system of measures:

Measuring wheel	Profile	Coating	Coating hardness	Standard bore [mm] ¹⁾	Measuring width [mm]	Material of wheel body	Weight (appr.) [g]	Wheel No.
1 foot	1	diamond knurl		6	13	aluminium	110	711

¹⁾ other bore diameters on request

Please note:

If a measuring wheel is mounted directly on the shaft of a rotary encoder, the pressure force between the measuring wheel and

measured material should not exceed the radial shaft load listed in the data sheet of the encoder. In addition, the measuring wheels can only be used for in-house pur-

poses which are not subject to the stipulations of the German calibration code.

Order code:

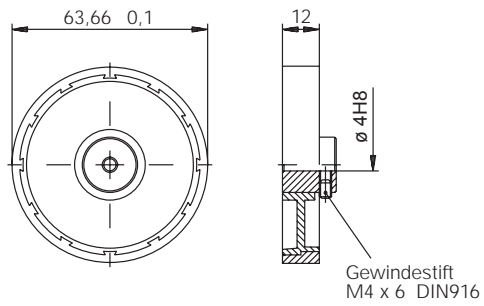
8.0000.3XXX.00XX

Measuring wheel no.

bore diameter

Measuring wheels

Dimension:
Type 3241 and 3291



Dimension:
Type 3542 and 3592

