

Rotary Measuring Technology

Incremental shaft/hollow shaft encoder

Ex-proof Type 7030 with ATEX



- Very compact design, housing \varnothing 70 mm with EEx d IIC T6 approval
- Hollow shaft or shaft \varnothing 12 mm
- Very easy mounting. The hollow shaft encoder is mounted directly on the drive shaft without couplings. This saves up to 30 % cost and 60 % clearance compared to shaft versions
- Resolution up to 5000 ppr
- Temperature and ageing compensation
- Short-circuit proof outputs
- Reverse connection protection for voltage supply

New: ATEX approved

Mechanical characteristics:

Speed:	max. 6000 min ⁻¹
Rotor moment of inertia:	appr. 15 x 10 ⁻⁶ kgm ²
Starting torque:	< 0,05 Nm
Radial load capacity of shaft:	20 N (shaft version)
Axial load capacity of shaft:	10 N (shaft version)
Weight:	appr. 1,2 kg
Protection acc. to EN 60 529:	IP 64
Working temperature:	-20° C ... +60 °C
Shaft:	stainless steel
Shock resistance acc. to DIN-IEC 68-2-27	1000 m/s ² , 6 ms
Vibration resistance acc. to DIN-IEC 68-2-6:	100 m/s ² , 10 ... 2000 Hz

Pulse rates available at short notice:

10, 20, 25, 30, 50, 60, 100, 120, 125, 127, 150, 180, 200, 216, 240, 250, 254, 256, 300, 314, 360, 375, 400, 500, 512, 600, 625, 720, 745, 750, 762, 800, 900, 927, 1000, 1024, 1250, 1270, 1400, 1500, 1800, 2000, 2048, 2250, 2400, 2500, 3000, 3600, 4000, 4096, 5000

Other pulse rates on request

Electrical characteristics:

Output circuit:	RS 422 (TTL-compatible)	Push-pull
Supply voltage:	5 V ($\pm 5\%$) or 10 ... 30 V DC	10 ... 30 V DC
Power consumption (no load) without inverted signal:	-	typ. 55 mA / max. 125 mA
Power consumption (no load) with inverted signals:	typ. 70 mA / max. 90 mA	typ. 80 mA / max. 150 mA
Permissible load/channel:	max. ± 20 mA	max. ± 30 mA
Pulse frequency:	max. 300 kHz	max. 300 kHz
Signal level high:	min. 2,5 V	min. $U_B - 2,5$ V
Signal level low:	max. 0,5 V	max. 2,0 V
Rise time tr	max. 200 ns	max. 1 μ s
Fall time tf	max. 200 ns	max. 1 μ s
Short circuit proof outputs: ¹⁾	yes ²⁾	yes
Reverse connection protection at UB:	no	yes
Conforms to CE requirements acc. to EN 61000-6-1, EN 61000-6-4 and EN 61000-6-3		

¹⁾When supply voltage correctly applied

²⁾Only one channel at a time: (when $U_B = 5$ V, short-circuit to channel, 0 V, or $+U_B$ is permitted.)
(when $U_B = 10 \dots 30$ V short-circuit to channel or 0 V is permitted.)

Please note!

- All standards for installation of electrical systems in hazardous environment have to be observed.
- Manipulations (opening, mechanical treatment etc.) cause the loss of the EX-license, warranty claims will not be accepted and the installer will be responsible for any consequential damages.

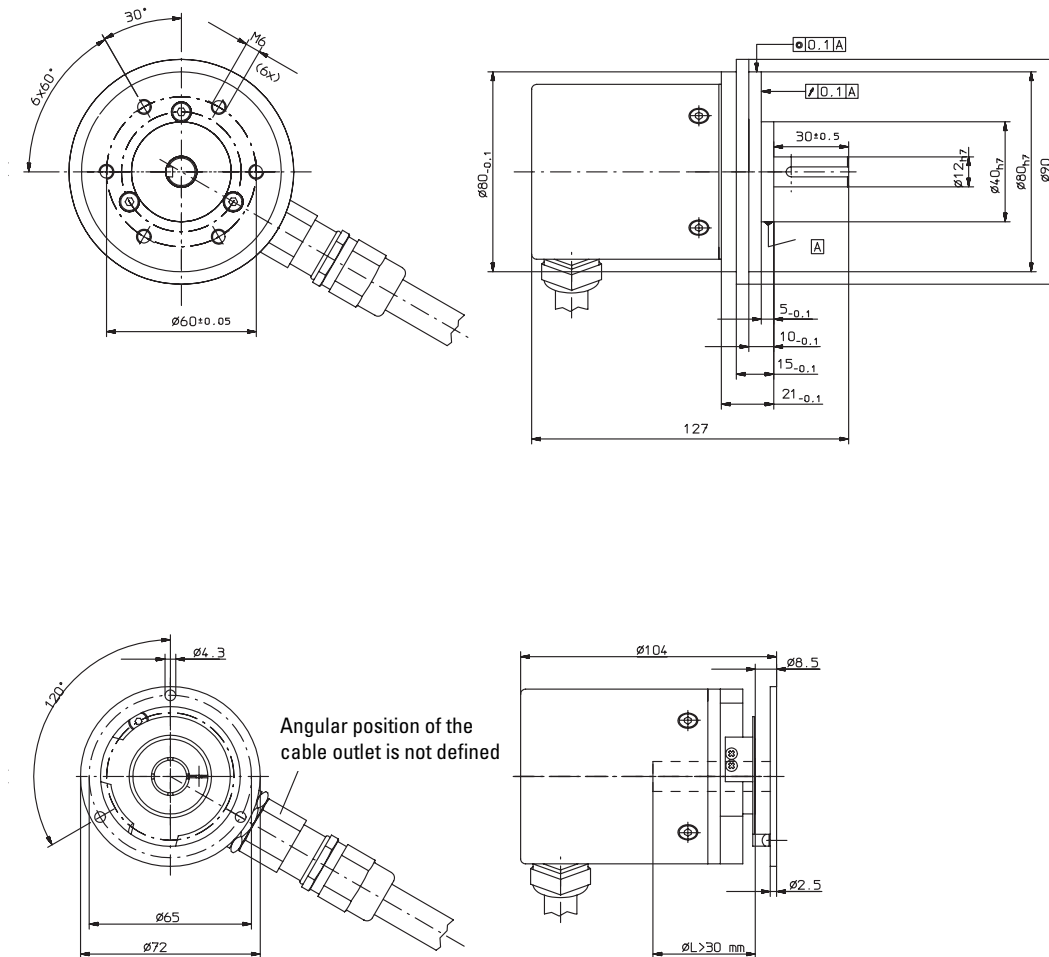
Rotary Measuring Technology

Incremental shaft/hollow shaft encoder



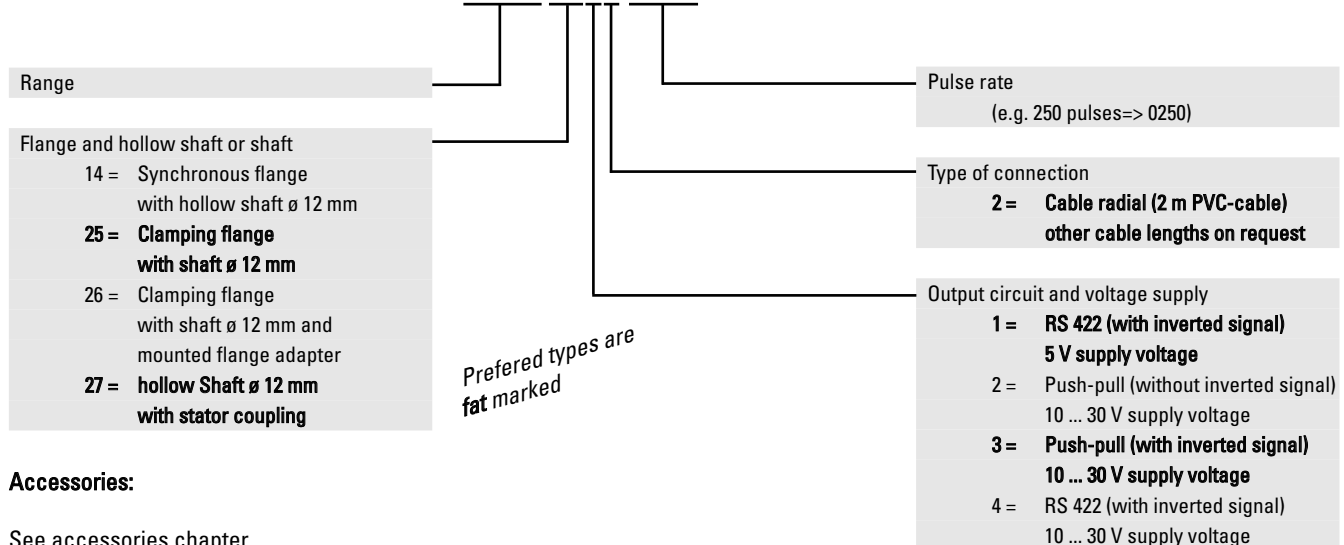
Ex-proof Type 7030 with ATEX

8.7030.26xx



Order code:

8.7030.XXXX.XXXX



Accessories:

See accessories chapter