

### Miniature Type 2420



- Low price at high performance
- IP 64
- Wide temperature range (-20 ... +85 °C)
- Housing is resistant against environmental influences due to chromium plated surface
- Sturdy cable output with multiple clamping
- Temperature compensation
- Broad input voltage range (5 ... 24 V or 8 ... 30 V)
- Highly flexible cable with stands constant flexing at 0 °C ... 70 °C)
- Low power consumption despite high scanning rate
- Reverse connection protected and short-circuit proof

#### Mechanical characteristics:

Speed:	max. 12000 min <sup>-1</sup>
Rotor moment of inertia:	appr. 0,1 x 10 <sup>-6</sup> kgm <sup>2</sup>
Starting torque:	< 0,001 Nm
Weight:	appr. 0,06 kg
Protection acc. to EN 60 529:	IP 64
Working temperature:	-20° C ... +85 °C
Operating temperature:	-20° C ... +90 °C
Shaft:	stainless steel
Shock resistance acc. to DIN-IEC 68-2-27	1000 m/s <sup>2</sup> , 6 ms
Vibration resistance acc. to IEC 68-2-6:	100 m/s <sup>2</sup> , 55 ... 2000 Hz

#### Pulse rates available at short notice:

10, 25, 36, **50**, 60, **100**, 125, 180, 200, 250, **360**, **500**, **512**, **1000**, 1080, **1024**

Other pulse rates on request

#### Electrical characteristics:

Output circuit:	Push-pull	Push-pull
Supply voltage:	5 ... 24 V DC	8 ... 30 V DC
Power consumption (no load):	max. 50 mA	max. 50 mA
Permissible load/channel:	max. 50 mA	max. 50 mA
Pulse frequency:	max. 160 kHz	max. 160 kHz
Signal level high:	min. U <sub>B</sub> = -2,5 V	min. U <sub>B</sub> = -3 V
Signal level low:	max. 0,5 V	max. 2,5 V
Rise time t <sub>r</sub> :	max. 1 μs	max. 1 μs
Fall time t <sub>f</sub> :	max. 1 μs	max. 1 μs
Short circuit proof outputs:	yes	yes
Conforms to CE requirements acc. to EN 61000-6-1, EN 61000-6-4 and EN 61000-6-3		

#### Applications:

- Pick and place machines
- Handling machines for electronic components
- Quality testing machines
- Medical machines
- Mail opening and mail stuffing machines
- Check weighers
- Labeling machines
- Mole machines (camera control)

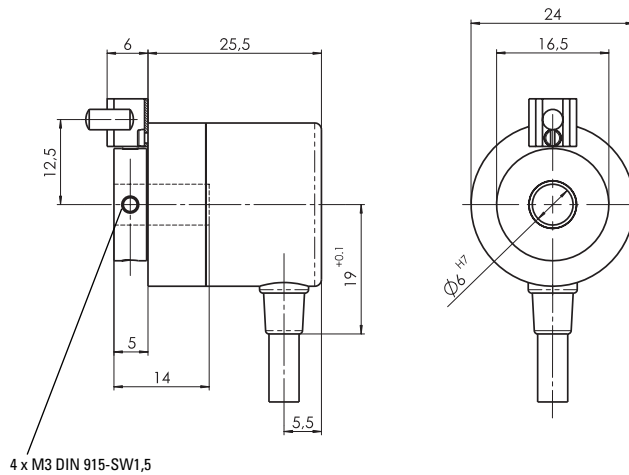
### Miniature Type 2420

#### Terminal assignment

Signal:	0V	+U <sub>B</sub>	A	$\bar{A}$	B	$\bar{B}$	0	$\bar{0}$	
Colour:	WH	BN	GN	YE	GY	PK	BU	RD	
without inverted signal:	WH	BN	GN		YE		GY		

Insulate unused outputs before initial startup.

#### Dimensions

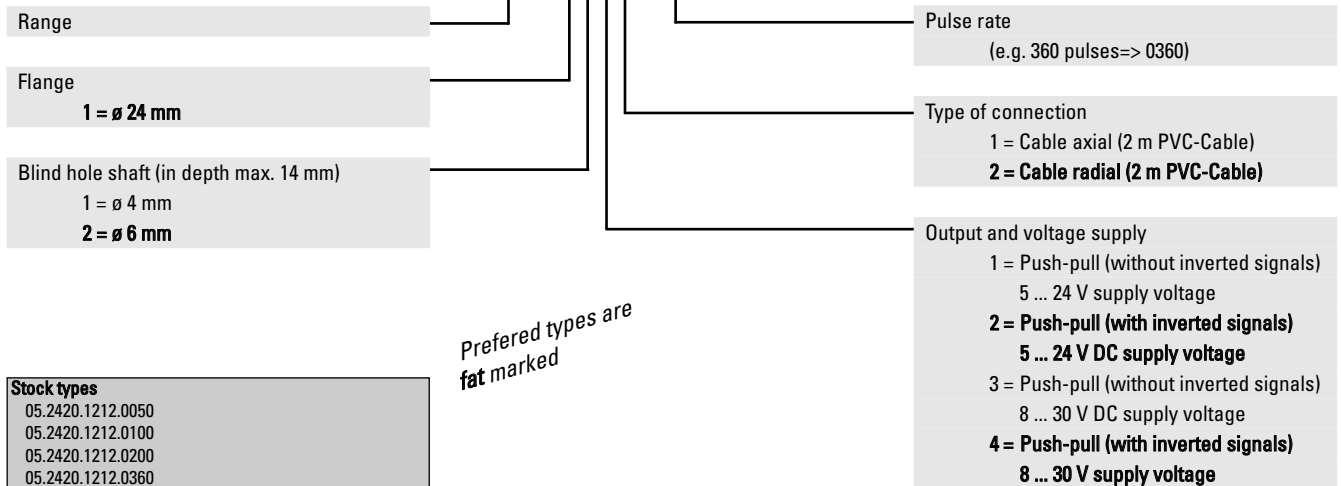


#### Mounting advice:

Do not connect encoder and drive rigidly to one another at shafts and flanges! Always use couplings to prevent shaft overload (see chapter accessories).

#### Order code:

**05.2420.XXXX.XXXX**



*Preferred types are fat marked*

#### Stock types

05.2420.1212.0050  
05.2420.1212.0100  
05.2420.1212.0200  
05.2420.1212.0360  
05.2420.1212.0500  
05.2420.1212.1000  
05.2420.1212.1024  
05.2420.1222.0050  
05.2420.1222.0100  
05.2420.1222.0200  
05.2420.1222.0360  
05.2420.1222.0500  
05.2420.1222.1000  
05.2420.1222.1024