

8 digit count module with LCD display



Your benefit

- small dimensions
- PCB mount
- low current consumption, for battery

Product features

- with manual and/or manual and electrical reset
- using a lithium battery with 1000 mAh the life is more than 10 years
- CMOS and TTL compatible

Technical data:

Power supply:	3 V (+0.2, -0.6 V) DC
Display:	LCD, 8-digit, figures 8 mm high
Counting system	adding or subtracting
Inputs:	
Quick count input:	Max. count frequency, 10 kHz, min. pulse time 50 μ s Input resistance 1 M Ω Switching level: Low: <0.7 V DC High: <2.5 V – UB (without R*) positive triggered see connection diagram
Slow count input:	Max. count frequency, 40 Hz min. pulse time 13 ms Input resistance 1 M Ω Switching level Low: <0.7 V DC High: <2.5 V – UB, negative triggered
Count direction:	static input, subtracting count as long as the input is 0.
Reset input:	static input, d.h. no count as long as the input is active. Please note: the reset input will be active,

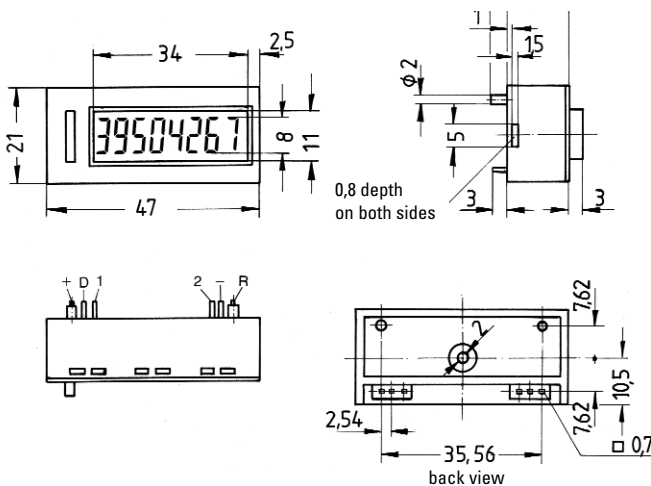
min. pulse time	12 ms
Input resistance	1 M Ω
Switching voltage	1.4 V
	negative triggered

Interference resistance:	EN 50081-1
Interference emissions:	EN 55022 class B
Housing colour:	black

Connections:	
1	quick count input
2	slow input
D	count direction
R	reset
+, -	Power supply

Type:	
180.2:	module with electrical reset
180.3:	module with manual and electrical reset

Dimensions:



Connections:

