

Data Sheet

core module:
mechanical interlocking

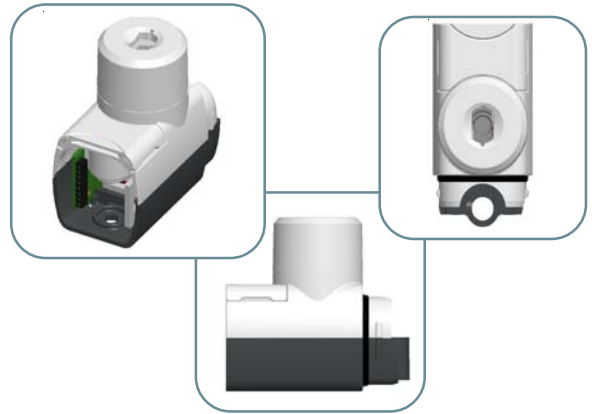


Total Access & Control

eGard offers "Total access & control". The innovative modular design allows configurations of purely safety gate switches, purely trapped key interlocks, purely machine control stations or any combinations of all three.

description:

a mechanical lock module complete with a robust radial tumbler lock, for use individually or as part of a trapped key system. A safety module ensures that the machine / process cannot be restarted without returning the keys, preventing personnel being accidentally locked in a guarded area. An access module is ideal for authorised access only, or for linked access to other machinery, ensuring a specific sequence of operations. It features a safe and easy method of requesting machine to stop. Mastered versions are also available (enabling a master key that can open all locks in a system, in the event of a lost key).



mechanical interlocking options:

access module
no key no
dustcover



AB Bi Directional
AU Uni Directional
QB Bi Directional
QU Uni Directional

safety module
with key no
dustcover



SB Bi Directional
SU Uni Directional
GB Bi Directional
GU Uni Directional

access key
module no key
with dustcover



AD Bi Directional
AE Uni Directional
QD Bi Directional
QE Uni Directional

safety module
with key with
dustcover



SD Bi Directional
SE Uni Directional
GD Bi Directional
GE Uni Directional

safety
module no
key no
dustcover



SN Bi Directional
SP Uni Directional
GN Bi Directional
GP Uni Directional

safety module
no key with
dustcover



SK Bi Directional
SL Uni Directional
GK Bi Directional
GL Uni Directional

keys and dustcovers

KM
master



DC



KS
standard

part number

part number

part number

Technical Data

core module: mechanical interlocking



technical specification

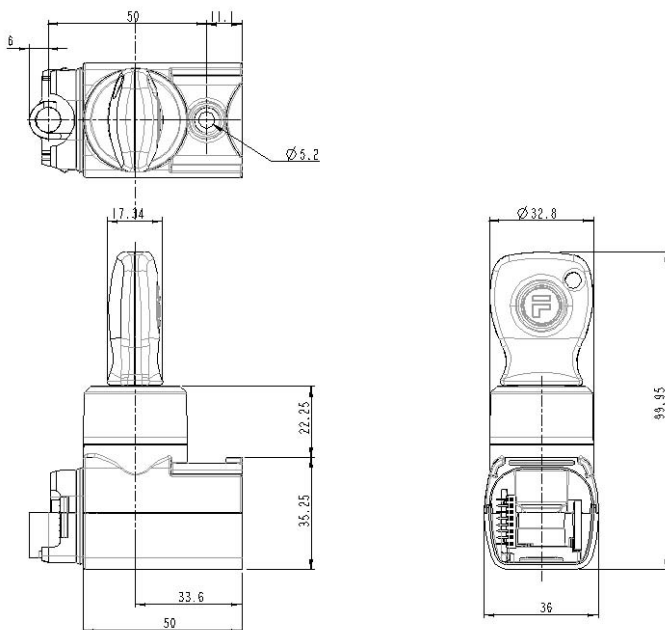
Housing Material	PBT
Colour	Light Grey & Dark Grey
Ingress Protection	IP65
Operating Force	< 1Nm
Retention Forced Locked	2000 N
Mechanical Life	1000000 Operations
Maximum Frequency of Operations	1 per second
Ambient Temperature	-5°C to + 40 °C

Mechanical Interlocking Module Input Outputs

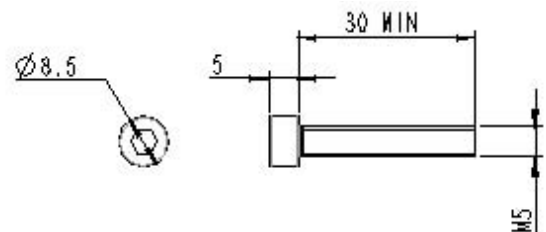
Module (1)	Input (0)	Output	Order of pin assignment from base to head	Module operates on safety circuits
Mechanical Lock	0	0	-	0

*For further information on eGard configuration rules please click [here](#)

Mechanical Drawing



Screw Drawing



www.fortressinterlocks.com

Fortress Interlocks Ltd reserves the right to alter product specification and introduce improvements without prior notice.

