

Data Sheet

core module:
electrical interlocking



Total Access & Control

eGard offers "Total access & control". The innovative modular design allows configurations of purely safety gate switches, purely trapped key interlocks, purely machine control stations or any combinations of all three.

description:

safety switch module has two normally closed contacts that operate on eGard's two safety circuits.

electrical locking / unlocking solenoid module is for controlling access, by electrically locking doors or trapping keys. These modules are used in applications with machine run-down (machine requires time to stop moving from when the control power is removed) or where the machines cycle shouldn't be interrupted (robot). It has one normally open monitoring contact that operates on eGard's internal control network.

runner bar status module has one normally open contact that operates on eGard's internal control network. It can be used as a monitoring contact to show the status of eGard (e.g. door open, key released etc...)



electrical interlocking options:

safety switch



SS

electrical locking (solenoid)



EU Power to unlock
EL Power to lock

runner bar status



RB

part number

part number

www.fortressinterlocks.com

= This is a **Control** Module

= This is a **Safety** Module



Technical Data

core module:
electrical interlocking



technical specification

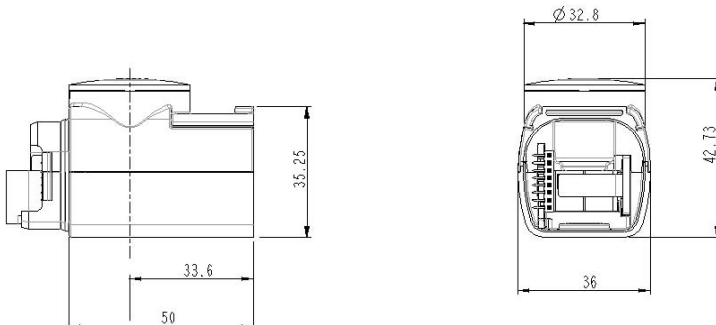
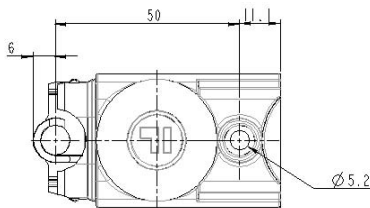
Housing Material	PBT
Colour	Light Grey & Dark Grey
Ingress Protection	IP65
Retention Force Locked	2000 N
Mechanical Life	1000000 Operations
Electrical Life	1000000 Operations
Maximum Frequency of Operations	1 per second
Ambient Temperature	-5°C to + 40 °C
Switching Contact Element- SS	2NC on Safety Circuits
- EL/EU	1NO on Control Network
- RB	1NO on Control Network
Switching Current	Refer to base module spec
Switching Voltage	Refer to base module spec

Electrical Interlocking Module Input Outputs

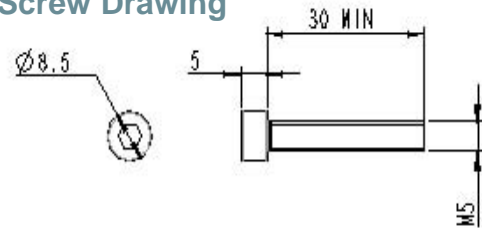
Part Number	Module	Input (1)	Output (0)	Order of pin assignment from base to head	Module operates on safety circuits
SS	Safety Switch	0	0	-	✓
EU/EL	Power to unlock Power to lock	1	1	Input assigned first	0
RB	Runner Bar Status	0	1	-	0

*For further information on eGard configuration rules please click [here](#)

Safety Switch Drawing



Screw Drawing



www.fortressinterlocks.com

Fortress Interlocks Ltd reserves the right to alter product specification and introduce improvements without prior notice.

