

# CLS Lock and Key



## Description

A robust disc tumbler lock offering 201,810 non-masterable combinations. A spring loaded dustcover is available as standard.

## IMPORTANT

This product is designed for use according to the installation and operating instructions enclosed. It must be installed by competent and qualified personnel who have read and understood the whole of this document prior to commencing installation. Any modification to or deviation from these instructions invalidates all warranties.

Fortress Interlocks Ltd accepts no liability for any situation arising from misuse or mis-application of this product.

**IF YOU HAVE ANY QUESTIONS OR QUERIES OF ANY NATURE PLEASE CONTACT YOUR SUPPLIER WHO WILL BE PLEASED TO ADVISE AND ASSIST.**

## Tools and Fixings Required

- M6 Tap or Ø 6.5 Drill
- 2 x M6 Screws
- 2 x M6 Nuts (Optional)
- 2 x M6 Washers (Optional)
- Ø6 mm Rivets (Optional)

## Mounting

Mount the unit only in its correctly assembled condition.

- 1 Locate the lock so that it is within easy reach.
- 2 Machine the panel using the dimensions from figure 1 if applicable.
- 3 Mount the unit to the panel using the 2 M6 screws, nuts and washers or rivets as applicable.
- 4 All fixing screws must be permanently prevented from removal, either by vibration or by personnel using standard tools.
5. Please also refer to the instructions for the switch-gear device or Fortress product to which the lock is being fixed.

## Protection Against Environmental Influences

A lasting and correct safety function requires that the unit be protected against the ingress of foreign bodies such as swarf, sand, blasting shot etc. A dustcover must be fitted where recommended.

The unit is to be mounted away from the machine, or by using anti-vibration mountings, in order to avoid the effects of vibration, shock and bump.

## Functionality

The key is inserted and turned, turning the spindle projecting from the basic lock. (With mounting bracketry the spindle an operate switchgear etc.)

The key is freed in the 12 o'clock position. Spindle movement is 90° clockwise.

## Service and Inspection

There are no user serviceable parts in this unit. If damage or wear is found the whole unit must be replaced. If lubrication is required use WD40.

**Do not use dry lubricant.**

Regular weekly inspection of the following is necessary to ensure trouble-free, lasting operation:-

- Correct operation
- Secure mounting of components
- Debris and wear

The complete interlock must be replaced after 1 million operations.

## Disposal

This interlock does not contain any certified hazardous materials so should be disposed of as industrial waste.

## Liability coverage is voided under the following conditions:

- 1 If these instructions are not followed.
- 2 Non-compliance with safety regulations.
- 3 Installation not performed by authorised personnel.
- 4 Non-implementation of functional checks.

## Environmental Specification

Environment Type **Indoor**  
 Max. Altitude **2000m**  
 Ambient Temperature **- 40°C + 150°C**  
 Ingress Protection **IP50**  
 With Dustcover fitted.

**Vibration Tested in accordance with BS EN 60068-2-64:1995**  
 Frequency Range

**20-2000Hz**  
 Severity **5.0(m/s<sup>2</sup>)/Hz**  
 No of Axes

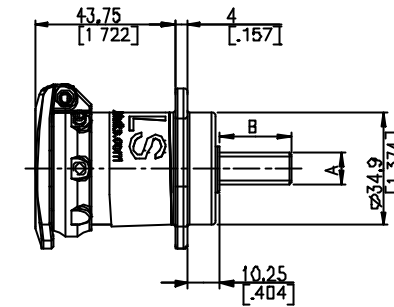
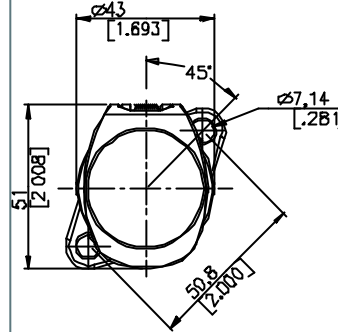
**3 (Longitudinal, Lateral & Vertical)**

Copies of the above certificates can be provided upon request.

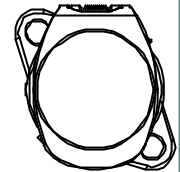
**The manufacturer reserves the right to modify the design at any time and without notice. This guide should be retained for future reference.**

## CLS Dimensions Drawing

### Right Hand Lock



### LEFT HAND LOCK



| DIM | STANDARD       | OPTION               |
|-----|----------------|----------------------|
| A   | 9.5 (3/8") SQR | AS STANDARD          |
| B   | 22.2 (7/8")    | 3.5-50.8 (0.138"-2") |

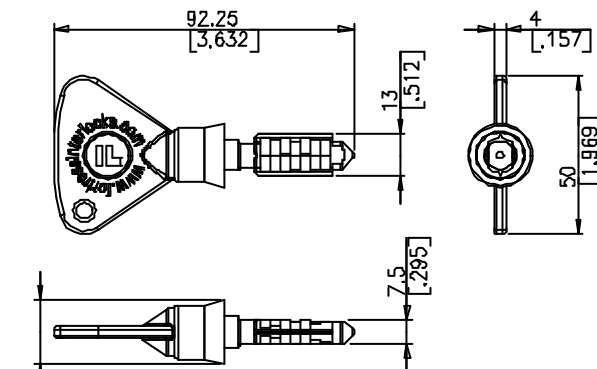


Figure 2

CLS Key

Fortress Interlocks Limited  
 148-150 Birmingham New Road  
 Wolverhampton, UK, WV4 6NT  
 Tel: +44 (0) 1902 499600  
 Fax: +44 (0) 1902 499610  
 E-mail: sales@fortress-interlocks.co.uk  
 Web Site: www.fortress-interlocks.co.uk

