

Safety Note: Do not break the pressure envelope of the valve.

Lubricate all moving parts of the 90L interlocking unit with Nickel/Graphite Anti-Seize compound (Bostik Never-Seez recommended). The internals of the CLS locks should be lubricated with WD40.

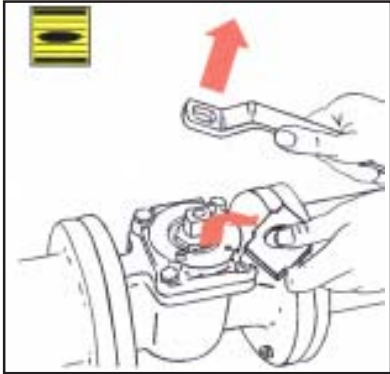


Fig.1 Remove lever and if required remove valve stop plate.

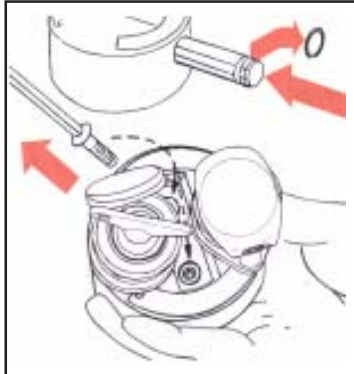


Fig. 2 Remove circlip and slide lever out, remove adaptor fixing screws.



Fig. 3 Separate lock from adaptor and anchor.

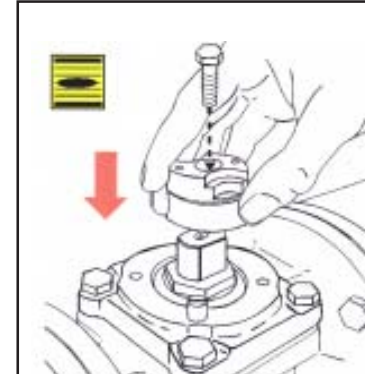


Fig. 4 Secure adaptor to valve, apply thread lock to valve adaptor fixing bolt thread. (Loctite Grade 221 or equivalent).

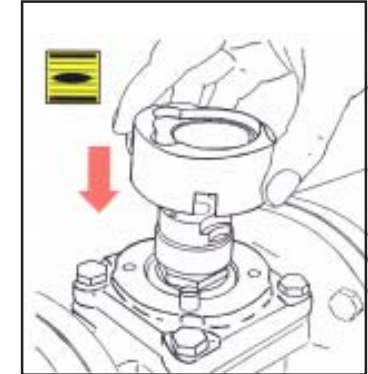


Fig. 5 Position anchor on adaptor, making sure it engages securely on the valve top works.

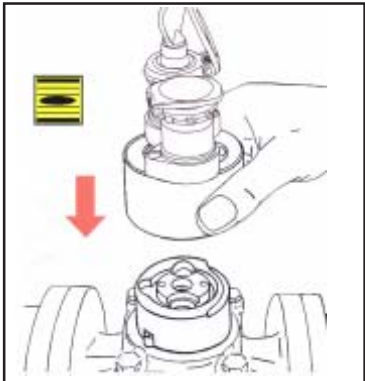


Fig. 6 Position lock body onto adaptor/anchor. Ensure lock moves freely through 90° with key/keys inserted.

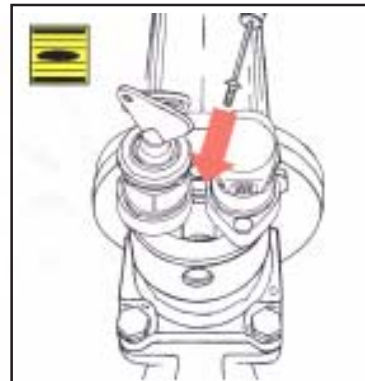


Fig. 7 Secure lock to adaptor using security screws, apply thread lock compound (Loctite Grade 221 or equivalent recommended).

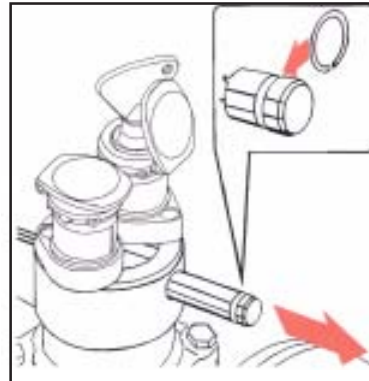


Fig. 8 Replace lever and circlip.

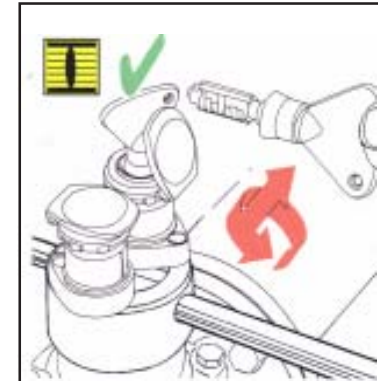


Fig. 9 Check operation:- close valve and remove key, lock valve. Reinsert key.

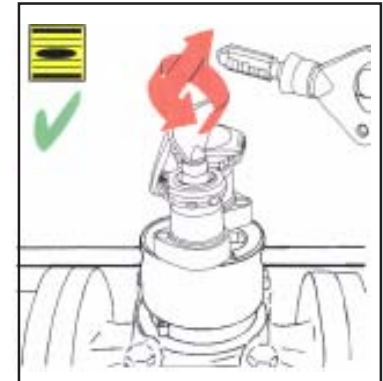


Fig. 10 Open valve and remove key to lock valve. Installation is now complete.