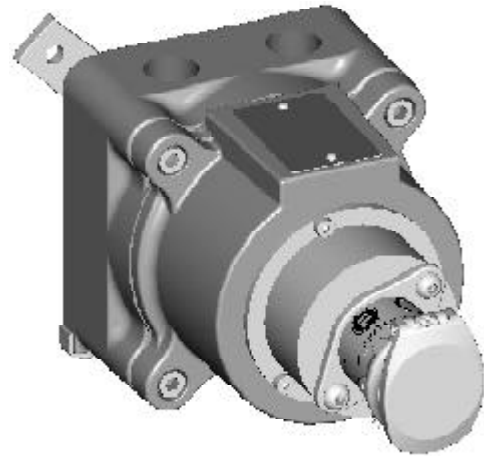


FLP-CLS

Explosion Protected Rotary Key Switch



Description

A key operated rotary switch for use in areas where explosive/flammable gases or dust particles may be present and is usually used for electrical isolation. The standard sequence is power on - key trapped. Once the key is turned and removed the power source is isolated and the key can be taken elsewhere.

Features & Benefits

- Certified to ATEX Directive 94/9/EC
- Direct drive operation - Positively opened contacts.
- Available from 6 amps to 63 amps (specials on request)
- Over 200,000 non-masterable lock combinations available
- Coding can be up to 30 characters
- 4NO or 2NO/2NC contacts available (specials on request).

Application

Part of an interlock system, the unit is used for control or isolation of electrical circuits operating plant or machinery, prior to for example carrying out maintenance.

Operation

The switch can only be operated by the key, which is normally held trapped when the switch is in the ON or 3 o'clock position. With the switch in the OFF or 12 o'clock position, the key can be removed and then transferred to another interlock unit within the system.

Construction

Lock mechanism: Stainless steel with a durable electro-polish finish to the lock casing.
Internals: All Stainless Steel
Enclosure - Cast Iron, Hot Dipped Galvanised finish, with 4 x 20mm ISO entries (2 top, 2 bottom) (2 plugged).
Degree of protection - IP65 (IEC 529)
Standard Switching - 16A 380/415V AC 4 Pole On/Off Arrangement or 2N/O, 2N/C
Keys - Stainless Steel

Keys

Please note all keys are ordered separately

Options

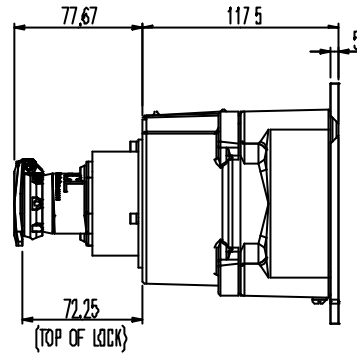
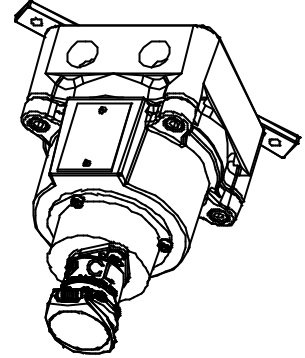
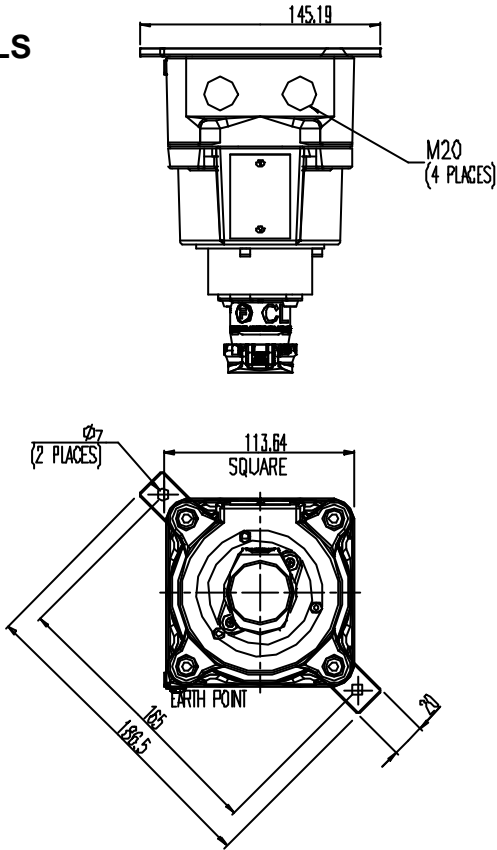
- Part/all stainless steel basic lock - BL/BLS, CL/CLS or ML/MLS
- Optional 'Key Free' position
- Optional switch contact configurations (to special order)



Fortress Interlocks

Technical Data Sheet FLP-CLS

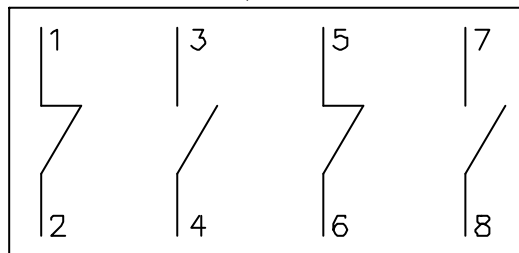
FLP-CLS



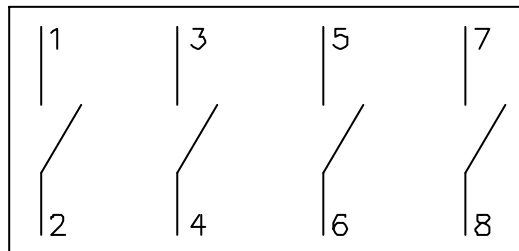
FLP- Wiring Diagram

FLP 16A SWITCHES

2NO / 2NC



4NO





Fortress Interlocks

Technical Data Sheet FLP-CLS

PRODUCT TYPE	LOCK TYPE	LOCK MATERIAL	DUSTCOVER	SWITCH AC/DC	SWITCH AMPS	SWITCH CONTACTS
FLP	CLS	STAINLESS STEEL LOCK	STAINLESS STEEL DUST COVER	AC	016 SWITCH AMPS	4 NORMALLY OPEN 0 NORMALLY CLOSED

PART NUMBER

FLP-CLSS-AC01640

Ordering and Example

Part Numbering - Please specify the following information at the point of ordering:-

Product Type: FLP
Lock Type: CL
Lock Material: S-Stainless Steel Lock
Dustcover: S-Stainless Steel Dust Cover
Switch AC/DC: AC
Switch Amps: 016-016 Switch Amps
Switch Contacts: 40-4 Normally Open 0 Normally Closed

If a product is not classified as a standard Fortress product the part number will be followed by X001 to denote its status.

PART NUMBER: FLP-CLSS-AC01640