

BM & BMS

Bolt Module with single/multiple locks

Description

The **BM** is a robust, modular mechanical bolt interlock that is used to interface with power breakers, valves, earth switches etc, where hazards need to be indirectly interlocked (often with the use of levers and cams). This product is also available in full stainless steel.

Features and Benefits

- No product handling issues
- Horizontal and vertical mounting
- Multiple lock versions eliminate the need for separate key exchange boxes
- 16mm Diameter bolt with 16mm of travel
- Variable bolt length
- Front, top or bottom fixing
- Tested to over 1,000,000 operations
- Durable plated bodies
- Patented sequencing system with up to 39,000 different sequences in a BM10 or BMS10
- Easy to configure
- Sequential or non sequential key operation
- Extend or trim-down units and use surplus modules elsewhere
- Minimal maintenance
- Slim and attractive design
- Back of board adaptor available with BM modules

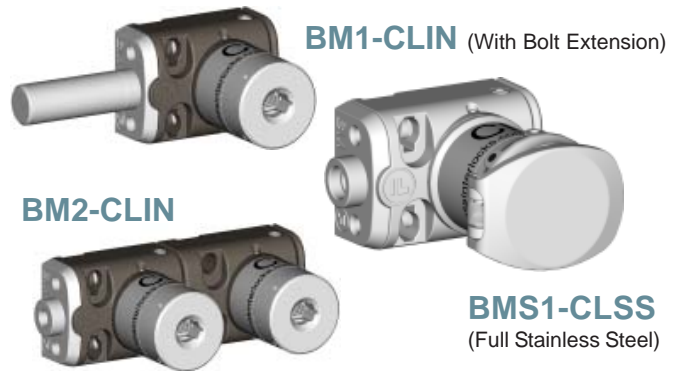
Application

Part of an interlock system, deadbolts are usually used to lock energy sources in the OFF position or lock devices in a required position.

Operation

BM1 Single Module - With the key free the bolt is usually in the extended position. To retract the bolt the key must be inserted and trapped (reverse sequence is available upon request). The operation of the key extends or withdraws the bolt which in turn may be used to interface with the mechanical linkages e.g. levers or cams on proprietary switchgear applications. Mounting kits must be either fabricated to suit or some are available from switchgear manufacturers.

Product Data Sheet



BM2-10 Multiple Modules - With the primary key free the bolt is usually in the extended position. To retract the bolt the primary key must be inserted, turned and trapped in the primary lock, and the secondary key turned and removed from the secondary lock (other sequences available on request). The operation of the key extends or withdraws the bolt which in turn may be used to interface with the mechanical linkages e.g. levers or cams on proprietary switchgear applications.

Construction BM

Body Housing: Die-cast zinc body with pearl bronze finish.

Internals: All stainless steel contact components.

Bolt: All stainless steel.

Lock Mechanism: CL or ML lock types are of die-cast zinc body with stainless steel operating mechanism.

Key: Stainless steel.

Construction BMS

Body Housing: Full stainless steel

Internals: Full stainless steel

Bolt: All stainless steel.

Lock Mechanism: CLS or MLS lock types are of all stainless steel.

Key: Stainless steel.

Spring Loaded Dustcover: Stainless steel.



CL & ML Keys
are sold separately

Options BM

- Surface or panel mounting option
- Stainless steel spring-loaded dust cover
- Extended/shortened bolt
- Optional key/bolt sequences
- Lock portions may be CL or ML
- Colour Coding on locks and keys

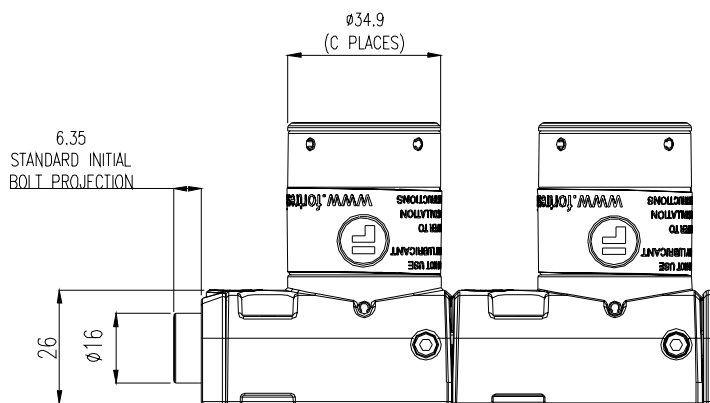
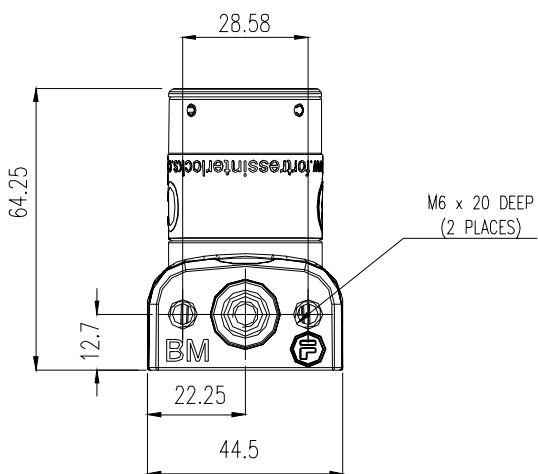
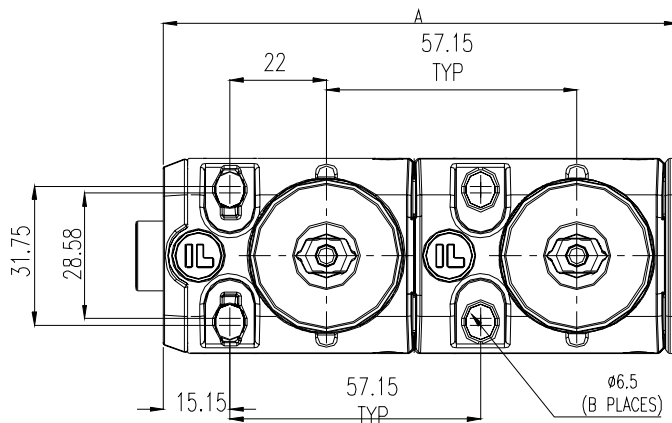
Options BMS

- Extended/shortened bolt
- Optional key/bolt sequences
- Lock portions may be CLS or MLS
- Colour Coding on locks and keys

Technical Data Sheets

PRODUCT	DIM A OVERALL LENGTH	DIM B NO OF SLOTTED HOLES	DIM C NO OF CL LOCKS
BM1	60.15	2	1
BM2	117.3	4	2
BM3	174.45	6	3
BM4	231.6	8	4
BM5	288.75	10	5
BM6	345.9	12	6
BM7	403.05	14	7
BM8	460.2	16	8
BM9	517.35	18	9
BM10	574.5	20	10

ALL DIMENSIONS ARE NOMINAL AND ARE SUBJECT TO MANUFACTURING TOLERANCES

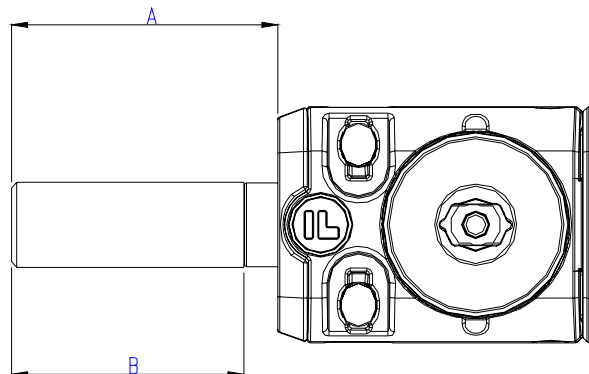


BOLT TRAVEL IS 16mm.

Extension Bolt

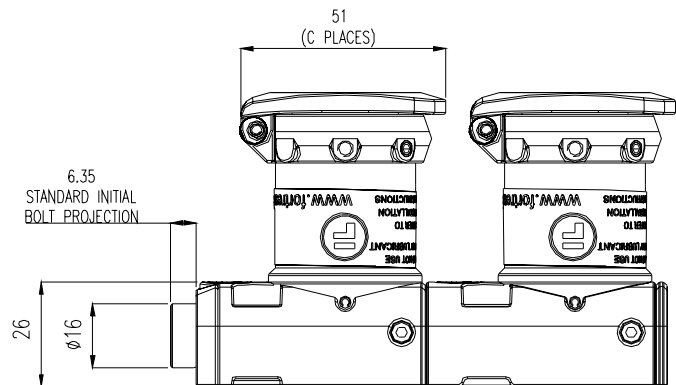
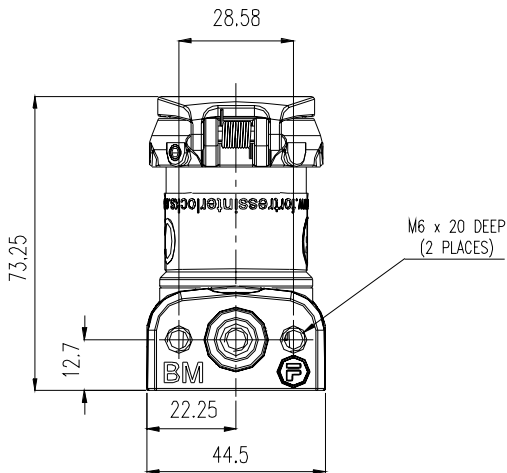
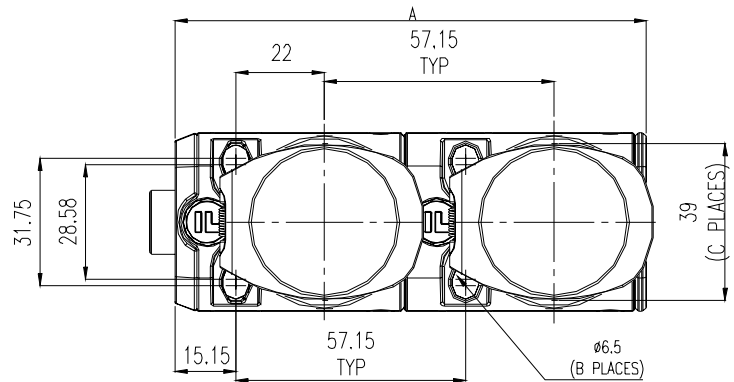
DIM A INITIAL PROJECTION	DIM B EXTENSION LENGTH
0	SHORTENED BOLT
6.35	NO EXTENSION
50	43.65
150	143.65

OTHER INITIAL BOLT PROJECTIONS BETWEEN 0 AND 150 ARE AVAILABLE UPON REQUEST



PRODUCT	DIM A OVERALL LENGTH	DIM B NO OF SLOTTED HOLES	DIM C NO OF CLS LOCKS
BMS1	60.15	2	1
BMS2	117.3	4	2
BMS3	174.45	6	3
BMS4	231.6	8	4
BMS5	288.75	10	5

ALL DIMENSIONS ARE NOMINAL AND ARE SUBJECT TO MANUFACTURING TOLERANCES



BOLT TRAVEL IS 16mm.

Back of Board Mounting Kit



Back of Board Mounting Kit shown in operation on a **BM2** and shown on its own.

- 1 Provides a flat mounting surface for back of board panel mounting.
- 2 Easy conversion from front of board, surface mounting.
- 3 Uses BM fixing centres.



XMA

Add-On Module(s)

The XMA module(s) can be added to an existing **BM** product for system expansion at any stage. XMSA module(s) are available for the BMS.

Part Number

Starting from the left and working across select a coloured option for each section heading. This will generate a part number.

Example Part Numbers: BM3-CLIN-A, BMS3-CLSN-B050

Product	No. of Locks	Lock Type	Lock Material	Dust cover	Sequence	Bolt Length
BM	1 -	CL	Stainless steel Internals	None -	A	*006 -
	2 -	ML			B	050 -
	3 -				C	150 -
	4 -				D	
	5 -					
BMS (1 to 5 only)	6 -		Full Stainless steel	Stainless steel -		
	7 -					
	8 -					
	9 -					
	10 -					

*Standard bolt length, omitted from part number

Sequence Key

Sequence	Explanation
A	Primary Key Free, Secondary Key Trapped, Bolt Shot
B	Primary and Secondary Keys Free, Bolt Shot
C	Primary and Secondary Keys Free, Bolt Withdrawn
D	Primary Key Free, Secondary Key Trapped, Bolt Withdrawn