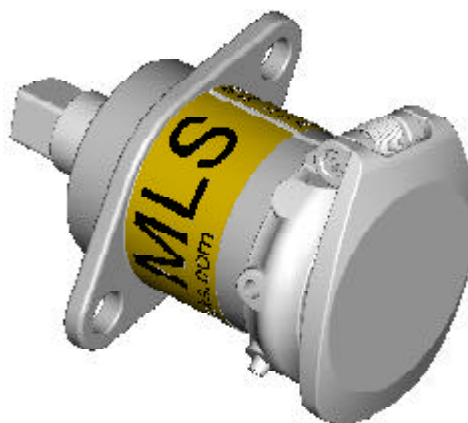


Master Lock (MLS)

Stainless Steel Master Lock and Key



Description

A robust radial disc tumbler lock, the building block of the Fortress range, offering in excess of 200,000 masterable combinations in up to 2,000 sets. A spring-loaded stainless steel dustcover is a standard feature with the full stainless steel product. Combinations are determined by customer defined coding details supplied at the time of ordering, giving full control over the integrity of the interlock system.

Features & Benefits

- Ease of operation
 - Dual orientation key entry leading to easy operation
 - Smooth and effortless rotation
 - Clockwise operation to provide consistency
- All stainless steel
- Over 200,000 lock combinations
- Suitable for high frequency applications
- Heavy duty
- High Integrity
- Compatible with the CL Lock, AmGard and KeyGard ranges
- Multi-level masterable options available
- Wide temperature range -40° + 150°C

Operation

The key is inserted and turned, turning the spindle projecting from the basic lock. (With mounting bracketry the spindle can operate switchgear etc). The key is inserted in the 12 o'clock and 6 o'clock positions. Spindle movement is 90°.

Construction

Lock construction - Stainless steel with an electro-polished finish to the lock casing. The internal lock components are made from stainless steel. Standard spindle dimensions are 9.5mm (3/8") square x 22mm (7/8") long. Locks are either left or right 'handed'.

Application

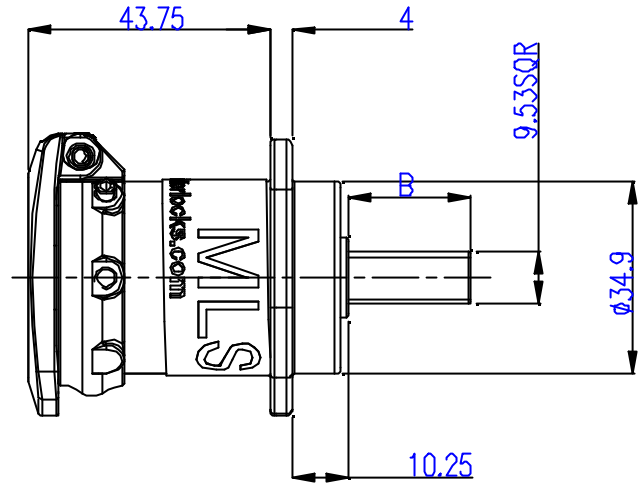
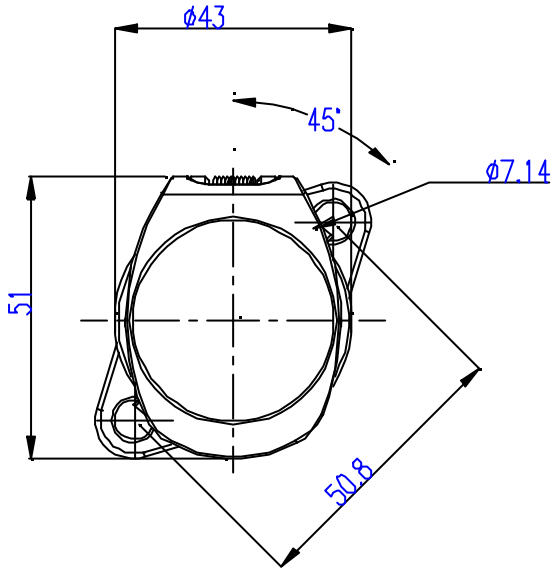
As part of an interlock system the basic lock directly or indirectly isolates the energy sources. **MLS** is ideally suited to frequent use applications and includes the following industries: -

- Food and Drink • Pharmaceutical • Petro-Chemical • Brick, Block and Tile

Keys

Keys are manufactured in Stainless Steel. Please note keys are ordered separately.

RIGHT HAND LOCK



LEFT HAND LOCK

DIM	STANDARD	OPTION
B	22.2 (7/8")	3.5-50.8 (0.138"-2")

