

SERIE FURTIF 2SSR **STAND-ALONE without safety module**

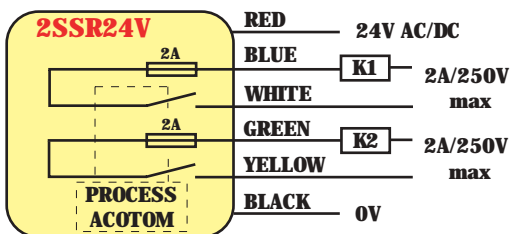
NON-CONTACT MULTICODE SAFETY SWITCH FOR THE POSITIONING OF MOVING PROTECTORS

- **Detection distance/hysteresis/misalignment :**
4 /+2 /±5 (mm)
- **2 NO 2A/250V (ref : 2SSR24V)**
- **1NO+1NC 2A/250V (ref : 2SSR24BX)**
- **Red LED indicating the code absence**
- **Mounting brackets and moulded cable**
- **Polycarbonate housing**
- **Protection class IP67**
- **Temperature -20°C to+60°C**
- **8 codes (001 to 008) : ref+code**

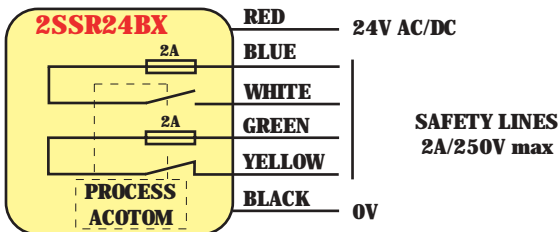
SAFETY CATEGORY

2SSR24V and BX : category 1 according to EN954-1
category 2 with periodical check
Switches in series + safety module : category 3
Category 4 if only one switch + safety module

ELECTRICAL DIAGRAM

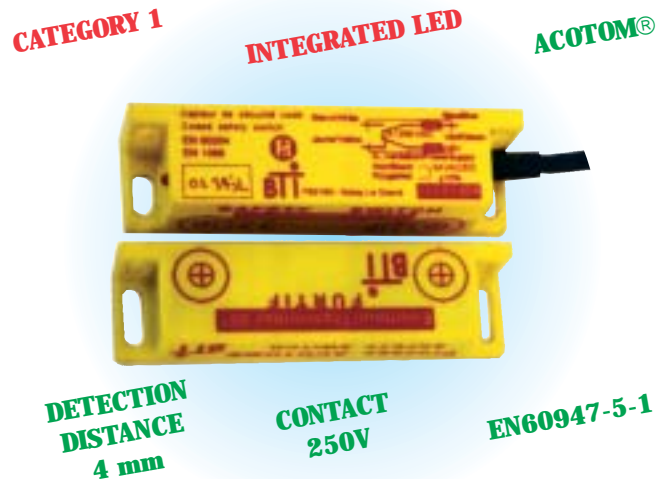


cat.1

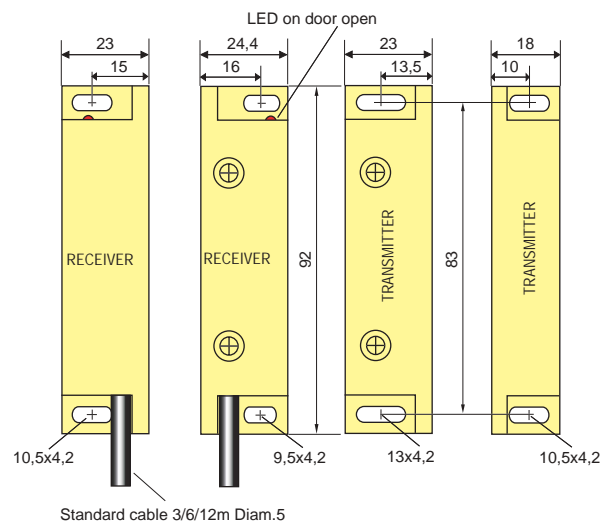


SAFETY LINES
2A/250V max

cat.1



DIMENSIONS



Standard cable 3/6/12m Diam.5

Adapted to the machines where the danger is close to the moving protectors

ADVICE

Our switches are equipped with a 2A fuse in order to guarantee the electrical protection : it protects 1/4 of the maximum admissible current by the contacts.

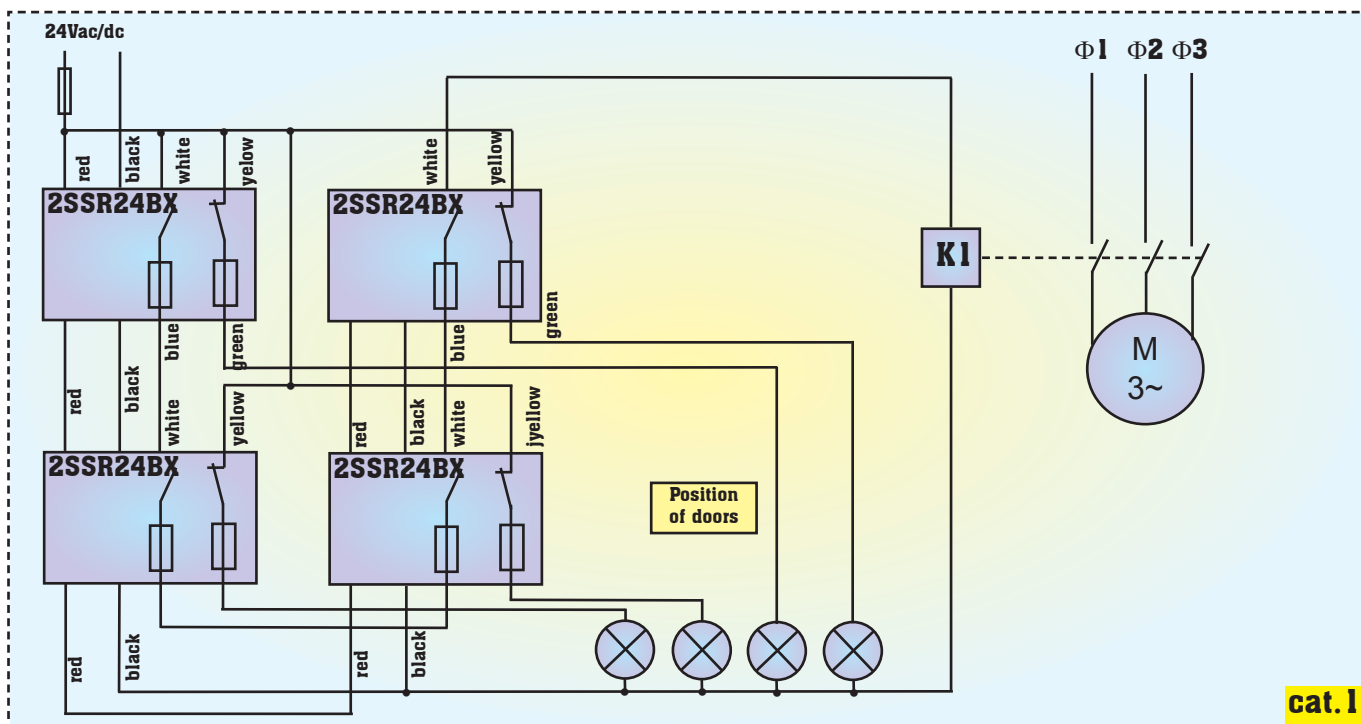
The weak detection distance and weak hysteresis is adapted to the position control : e.g. rotative machining centers

DIAGRAMS

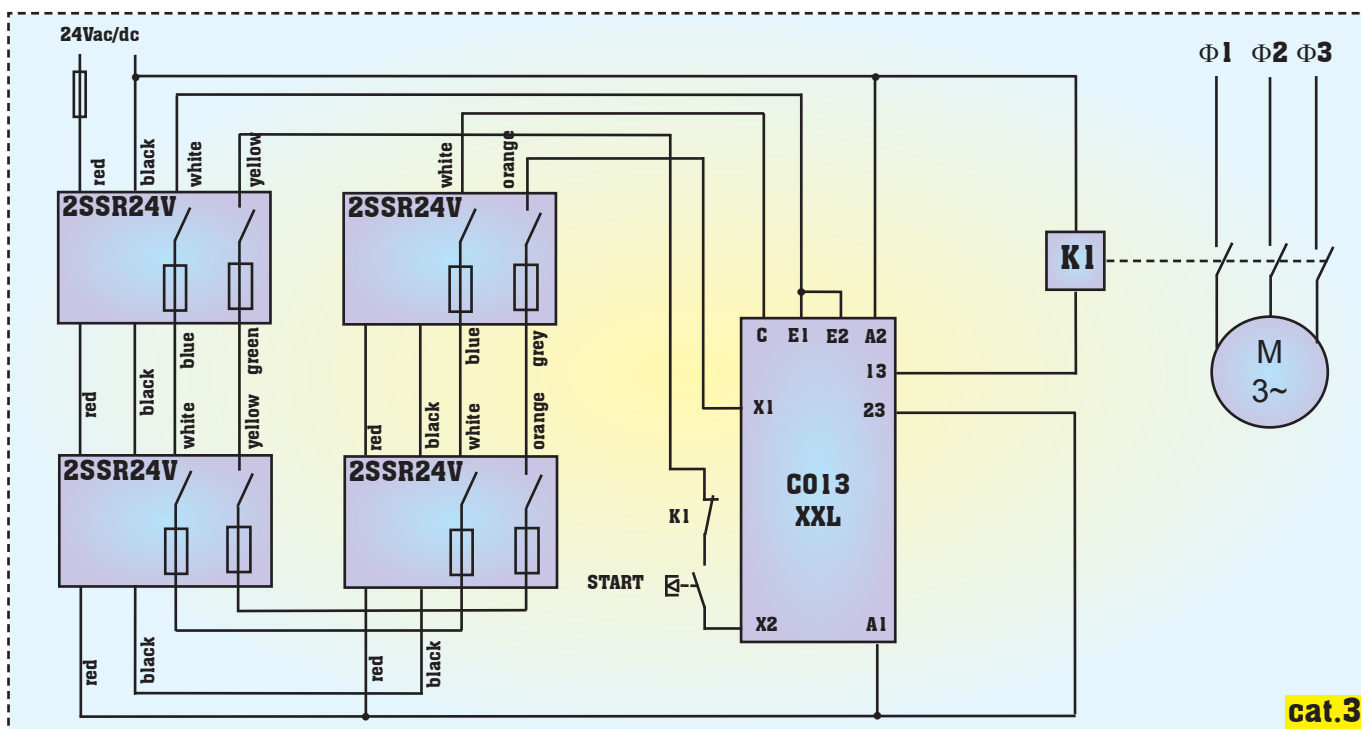
apPlication diagram

ACCESS protection in category 1

category 1 of power parts



cat. 1



cat. 3