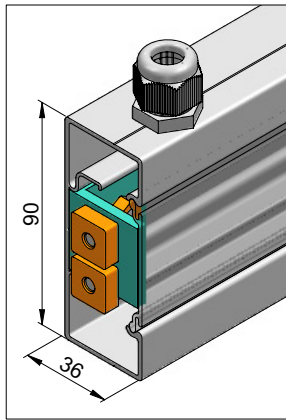
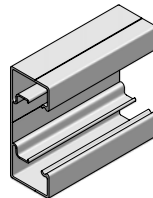
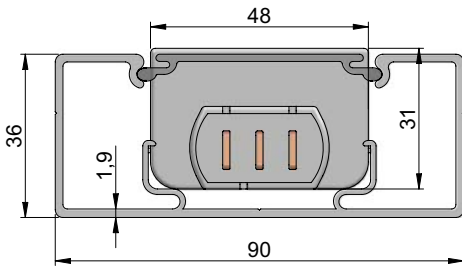
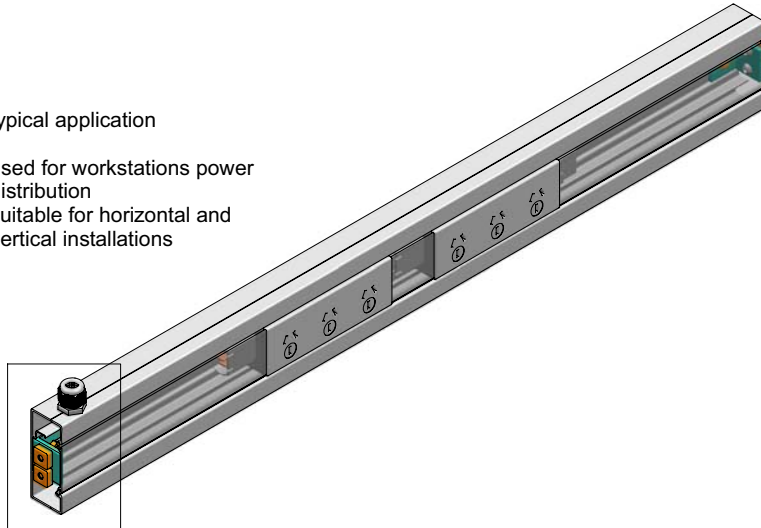


modular soft wiring system  
for 30 and 40 series profiles



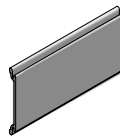
typical application

used for workstations power distribution  
suitable for horizontal and vertical installations



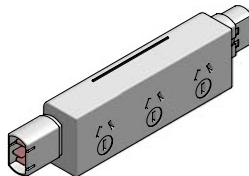
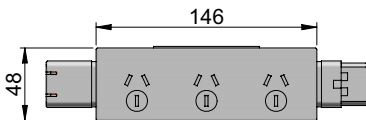
**electrical duct**  
Part Number: 452.20

Material: anodised aluminium  
max. length: 6000mm  
weight = 1.13kg/m

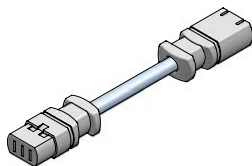


**electrical duct cover**  
Part Number: 452.21

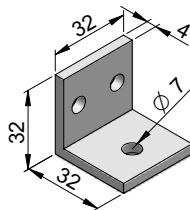
Material: anodised aluminium  
max. length: 3000mm  
weight = 0.31kg/m



**triple power module**  
Part Number: 312.80



**feed lead**  
Part Number: 312.05 500mm  
312.10 1000mm  
312.15 1500mm  
312.20 2000mm



**electrical duct mounting angle**  
Part Number: 312.32

Material: aluminium



**16mm cable gland**  
Part Number: 321.42

Material: plastic black