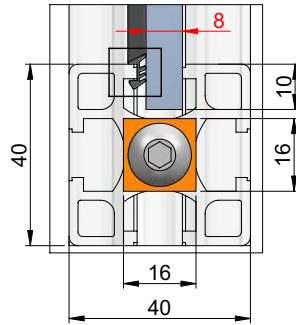
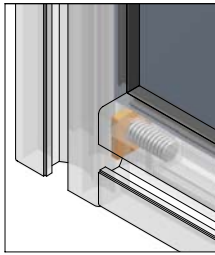


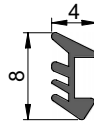
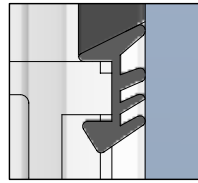
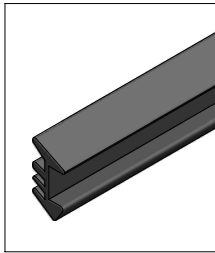
4 & 6mm rubber wedge
for 30 and 40 series profiles



typical application

for securing panel elements of 6 or 8mm thickness which are inserted into profiles slots, no adhesives required, just push into the slot.

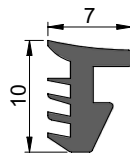
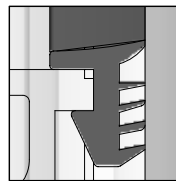
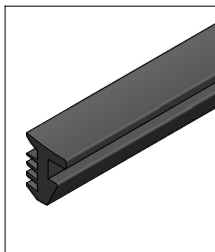
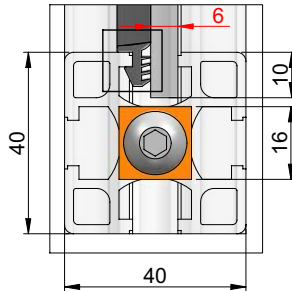
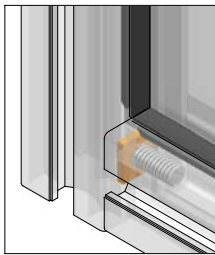
using lubricant such as soapy water is essential to ensure proper location of the wedge



rubber wedge 4mm
Part Number: 265.54

Material: synthetic rubber

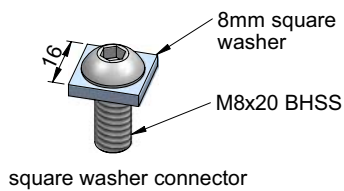
used with **8mm** thick panels for 30 and 40 series profiles



rubber wedge 6mm
Part Number: 265.56

Material: synthetic rubber

used with **6mm** thick panels for 30 and 40 series profiles



installation hints

use square washer connector if using square cut panels

1. panels size calculation for 40x40 series profiles:
inside frame size + 10mm each side
e.g. inside frame = 520x640, panels size: 540x660

2. panels size calculation for 30x30 series profiles:
inside frame size + 6mm each side
e.g. inside frame = 470x580, panels size: 482x592

panel elements may need to be notched at their corners when other connectors are used