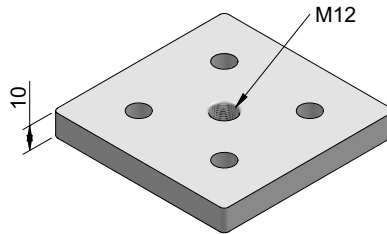
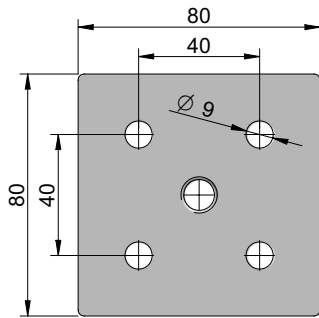


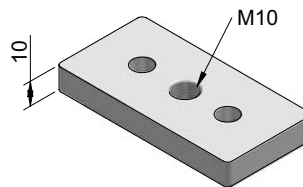
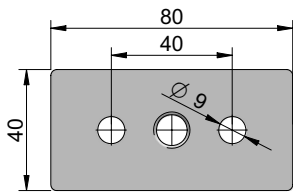
foot plates



foot plate 80x80
Part Number: 406.22

material: 10mm aluminium
finish: natural anodised

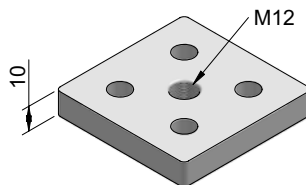
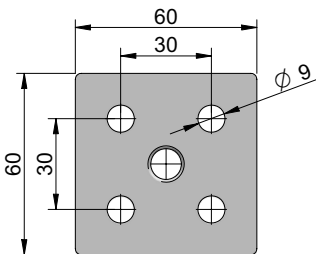
to suit 80x80 profile, for
mounting feet or castors



foot plate 40x80
Part Number: 406.32

material: 10mm aluminium
finish: natural anodised

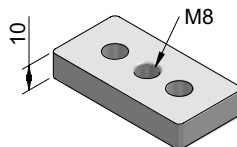
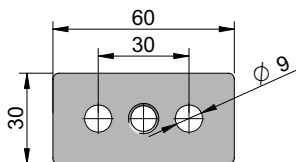
to suit 40x80 profile, for
mounting feet or castors



foot plate 60x60
Part Number: 410.66

material: 10mm aluminium
finish: natural anodised

to suit 60x60 profile, for
mounting feet or castors



foot plate 30x60
Part Number: 406.36

material: 10mm aluminium
finish: natural anodised

to suit 30x60 profile, for
mounting feet or castors