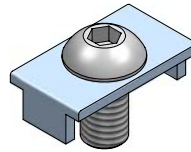
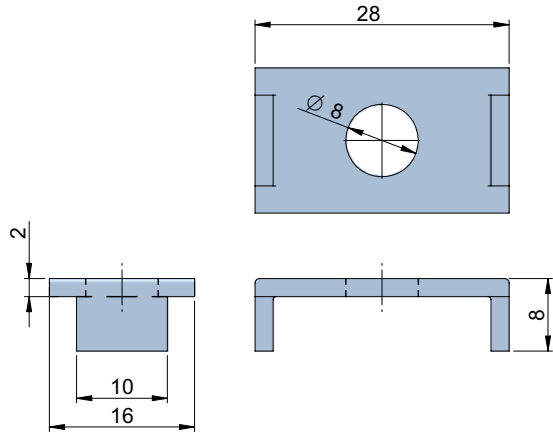
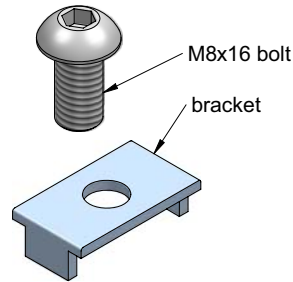


# M8-10 bracket connector for 30 series profiles

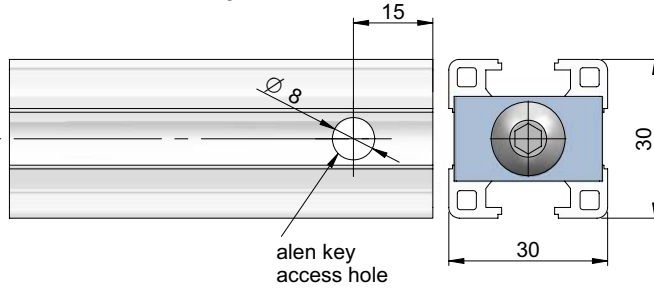


**M8-10 bracket connector**  
**Part Number: 026.08**

consisting of one M8x16 bolt  
and one bracket.

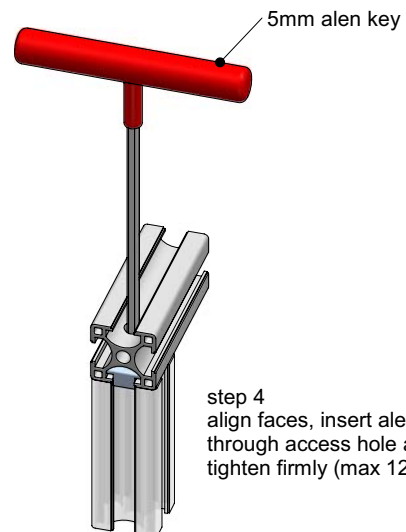
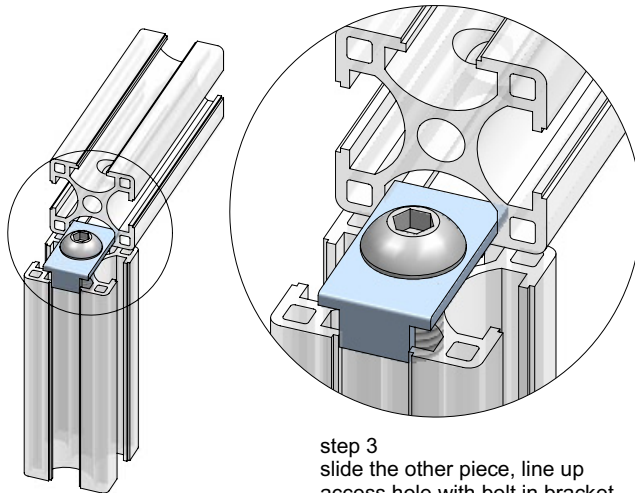
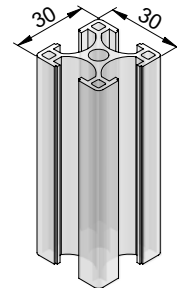


drilling diagram for right  
angled connection



step 2  
place bracket on top of  
profile,  
screw partially into  
profile, allow 4-5mm gap

step 1  
tap end M8,  
20mm deep



step 4  
align faces, insert allen key  
through access hole and  
tighten firmly (max 12Nm)