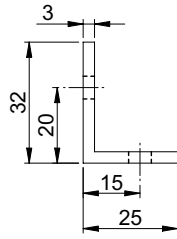
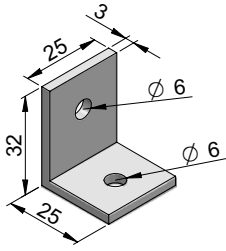


aluminium angles

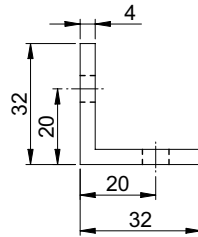
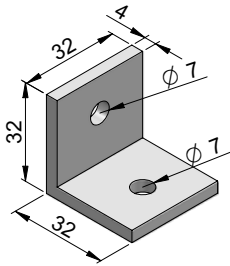
typical application

- mounting panels
- table top
- switches, accessories
- assembly jigs
- fastening profiles



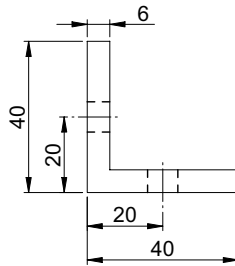
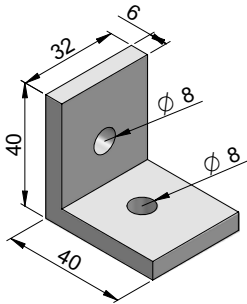
32x25x3 angle
Part Number: 026.20

used with 40 & 30 series profiles



32x32x4 angle
Part Number: 026.23

light duty angle used with 40 series profiles



40x40x6 angle
Part Number: 026.43

heavy duty angle, used with 40 series profiles

possible uses

